

Disgyblion 15 oed

Nifer y disgyblion 15 oed a oedd ar y gofrestr yn Ionawr 2013 : 203

Canran y disgyblion 15 oed a:

	gofrestrodd am o leiaf un cymhwyster	enillodd drothwy Lefel 1	enillodd drothwy Lefel 2	enillodd drothwy Lefel 2 gan gynnwys TGAU mewn Saesneg neu Gymraeg iaith gynrif a mathemateg	Dangosydd Fynclau Craidd (2)	Sgôr bwyntiau gyfarflog ehangach lefel ddiogel wedi chapio (3)	Sgôr bwyntiau gyfarflog eang am bob diogel
Ysgol 2012/13	100	88	86	89	53	375	667
Ardal AL 2012/13	100	87	83	84	51	369	564
Cymru 2012/13	100	83	76	88	49	333	501
Ysgol 11/12/13	100	88	81	81	57	365	627
Ysgol 10/11/12	100	87	74	82	58	347	641

Nifer y bechgyn 15 oed a oedd ar y gofrestr yn Ionawr 2013 : 98

Canran y bechgyn 15 oed a:

	gofrestrodd am o leiaf un cymhwyster	enillodd drothwy Lefel 1	enillodd drothwy Lefel 2	enillodd drothwy Lefel 2 gan gynnwys TGAU mewn Saesneg neu Gymraeg iaith gynrif a mathemateg	Dangosydd Fynclau Craidd (2)	Sgôr bwyntiau gyfarflog ehangach lefel ddiogel wedi chapio (3)	Sgôr bwyntiau gyfarflog eang am bob ddiogel
Ysgol 2012/13	100	87	84	87	53	364	537
Ardal AL 2012/13	100	88	78	83	50	346	564
Cymru 2012/13	100	82	74	88	48	320	475
Ysgol 11/12/13	100	98	78	86	63	352	585
Ysgol 10/11/12	100	87	89	85	63	338	518

Nifer y merched 15 oed a oedd ar y gofrestr yn Ionawr 2013 : 105

Canran y merched 15 oed a:

	gofrestrodd am o leiaf un cymhwyster	enillodd drothwy Lefel 1	enillodd drothwy Lefel 2	enillodd drothwy Lefel 2 gan gynnwys TGAU mewn Saesneg neu Gymraeg iaith gynrif a mathemateg	Dangosydd Fynclau Craidd (2)	Sgôr bwyntiau gyfarflog ehangach lefel ddiogel wedi chapio (3)	Sgôr bwyntiau gyfarflog eang am bob diogel
Ysgol 2012/13	100	100	93	87	53	346	606
Ardal AL 2012/13	100	89	83	86	57	373	624
Cymru 2012/13	100	85	82	87	53	347	528
Ysgol 11/12/13	100	98	87	87	61	376	565
Ysgol 10/11/12	100	97	81	79	66	354	567

(1) I gael manylion ar gynhwysereu sydd wedi'u cymeradwyo, sgôr prynciau a chyfranid ar y llacthwy, gweler y Cronfa Ddetai Cymhwysereu Cymraedwy Cymru (DAC2W) yn <http://www.nasw.org.uk/>

(2) Mae manylion ynglŷn â pha ffordd llafur sydd yn mabwysed ar gael yn y nodiadau cyfarwyddyd

(3) Cyfeir y sgôr pwyntiau gyfarflog eang wedi'i gasio gan ddefnyddio'r amlinlyniad ganu.

(4) Cymhwyster Lefel Myrddiad.

(5) Yn yr SSSP te' ym, byddw' yn cynnwys y canran o ddiogelion 15 oed yn ymchael adolyg Ionawr am swer gyda dim cymhwyster cydnabyddedig yn lle'r dangosydd hwn, yn dilyn ddiploma y Dangosydd Perfformiad Canadesol (EDU/302).

(6) Defnyddir ar gyfer holl delioau mewnoll prynciau am ddim.

(7) Defnyddir gyfrifo y teuluoedd ystadegol yn y Sefidau Data Craidd.

... Data ddim ar gael.

Pupils aged 15

Number of pupils aged 15 who were on roll in January 2013 : 203

Percentage of pupils aged 15 who:

	entered at least one qualification	achieved the Level 1 threshold	achieved the Level 2 threshold	achieved the Level 2 threshold including a GCSE pass in English or Welsh first language and mathematics	Core Subject Indicator (2)	Average capped (3) wider points score per pupil	Average wider points score per pupil
School 2012/13	100	93	89	55	53	375	587
LA Area 2012/13	100	87	85	54	51	365	594
Wales 2012/13	100	93	78	53	49	333	501
School 11/12/13	100	98	81	61	57	383	627
School 10/11/12	100	97	74	62	59	347	541

Number of boys aged 15 who were on roll in January 2013 : 96

Percentage of boys aged 15 who:

	entered at least one qualification	achieved the Level 1 threshold	achieved the Level 2 threshold	achieved the Level 2 threshold including a GCSE pass in English or Welsh first language and mathematics	Core Subject Indicator (2)	Average capped (3) wider points score per pupil	Average wider points score per pupil
School 2012/13	100	97	88	57	58	394	637
LA Area 2012/13	100	96	79	53	50	346	604
Wales 2012/13	100	92	74	49	46	320	475
School 11/12/13	100	98	76	56	55	352	595
School 10/11/12	100	97	64	55	52	332	519

Number of girls aged 15 who were on roll in January 2013 : 105

Percentage of girls aged 15 who:

	entered at least one qualification	achieved the Level 1 threshold	achieved the Level 2 threshold	achieved the Level 2 threshold including a GCSE pass in English or Welsh first language and mathematics	Core Subject Indicator (2)	Average capped (3) wider points score per pupil	Average wider points score per pupil
School 2012/13	100	100	90	61	53	385	695
LA Area 2012/13	100	99	86	55	51	373	624
Wales 2012/13	100	95	82	57	53	347	629
School 11/12/13	100	98	87	67	61	376	666
School 10/11/12	100	97	81	70	56	358	567

(1) For details on approved qualifications, point scores and contribution to thresholds, please see the Database for Approved Qualifications in Wales (DAQW) at <http://www.daww.org.uk/>

(2) For information about which syllabuses are included in each subject area see Notes for Guidance.

(3) Average capped wider point scores are calculated using the best 8 results.

(4) Entry Level Qualification.

(5) For the final SSSP this definition will be replaced with the percentage of pupils aged 15 leaving education with no qualifications as defined under the National Performance Indicator EDU002.

(6) Used for all Free School Meal benchmarking tables.

(7) Used in the calculation of the Core Data Set statistical family.

.. Data not available.

Pupils aged 15

Nifer y disgyblion 15 oed a oedd ar y gofrestr yn Ionawr 2013 : 203

Canran y disgyblion 15 oed a:

	enill A +C mewn Socnag / Cymraeg	enill A +C mewn Mathemateg	enill A +C mewn Gwyddoniaeth	Pwyntiau cyfaralog Saesneg / Cymraeg fesul disgybl	Pwyntiau cyfaralog Mathemateg fesul disgybl	Pwyntiau cyfaralog Gwyddoniaeth fesul disgybl
Ysgol 2012/13	68	68	68	41	40	40
Ardal ALI 2012/13	68	62	73	40	37	40
Cymru 2012/13	64	60	75	38	36	38
Ysgol 11/12/13	68	71	71	40	40	40
Ysgol 10/11/12

Nifer y bechgyn 15 oed a oedd ar y gofrestr yn Ionawr 2013 : 98

Canran y bechgyn 15 oed a:

	enill A +C mewn Socnag / Cymraeg	enill A +C mewn Mathemateg	enill A +C mewn Gwyddoniaeth	Pwyntiau cyfaralog Saesneg / Cymraeg fesul disgybl	Pwyntiau cyfaralog Mathemateg fesul disgybl	Pwyntiau cyfaralog Gwyddoniaeth fesul disgybl
Ysgol 2012/13	61	76	70	39	41	40
Ardal ALI 2012/13	60	65	78	37	37	37
Cymru 2012/13	56	60	72	36	36	36
Ysgol 11/12/13	68	73	70	36	40	40
Ysgol 10/11/12

Nifer y merched 15 oed a oedd ar y gofrestr yn Ionawr 2013 : 105

Canran y merched 15 oed a:

	enill A +C mewn Saesneg / Cymraeg	enill A +C mewn Mathemateg	enill A +C mewn Gwyddoniaeth	Pwyntiau cyfaralog Saesneg / Cymraeg fesul disgybl	Pwyntiau cyfaralog Mathemateg fesul disgybl	Pwyntiau cyfaralog Gwyddoniaeth fesul disgybl
Ysgol 2012/13	77	83	86	42	39	39
Ardal ALI 2012/13	75	69	81	42	37	42
Cymru 2012/13	73	61	78	41	36	41
Ysgol 11/12/13	79	69	73	43	40	40
Ysgol 10/11/12

- (1) I gael manylion ar gymlwsterau eiddo wedi'u cynhyrddwy, sgôr pwyntiau a chyflaniad at y throthwy, gwelwch y Gronfa Ddeta Cymwysterau Cymraeg Cymru (DAGW) yn hllp://www.dagw.org.uk/
- (2) Mae manylion ynghyd â phas llywydd llafur eiddo yn rhif ob gwno argeol yn y nodiadau cyfarwyddys.
- (3) Cyfrifir y sgôr pwyntiau cyfaralog eiddo wedi'i geisio den ddefnyddio'r 8 callynied gorau.
- (4) Cymhwyster Lefel Mwyddiad.
- (5) Yn yr SSSP terfynol, byddon yn cynhyrwy y canran o ddisgyblion 15 oed yn ymdeud eiddog llawn am swer gyda d'n cymlwsterau cydnabyddedig yn l'er dangosydd hwn, yn dilyn diffiniad y Dangosydd Perfformiad Cenedlaethol EDU002.
- (6) Defnyddir ar gyfer holl ddeliau meistradi prycan am ddim.
- (7) Defnyddir gyfrifo y leuolusdd ystadegol yn y Sotiau Data Croud.
- .. Data not available.

Pupils aged 15

Number of pupils aged 15 who were on roll in January 2013 : 203

Percentage of pupils aged 15 who:

	achieved A*-C in English/Welsh	achieved A* C in Maths	achieved A*-C in Science	Average English/Welsh Points per pupil	Average Maths points per pupil	Average Science points per pupil
School 2012/13	65	62	59	41	43	40
LA Area 2012/13	65	62	79	40	37	40
Wales 2012/13	61	60	75	28	36	36
School 11/12/13	62	71	71	40	43	40
School 13/11/12

Number of boys aged 15 who were on roll in January 2013 : 98

Percentage of boys aged 15 who:

	achieved A*-C in English/Welsh	achieved A* C in Maths	achieved A*-C in Science	Average English/Welsh Points per pupil	Average Maths points per pupil	Average Science points per pupil
School 2012/13	61	72	70	39	41	40
LA Area 2012/13	60	65	75	37	37	37
Wales 2012/13	56	60	72	30	30	36
School 11/12/13	59	73	70	35	40	40
School 10/11/12

Number of girls aged 15 who were on roll in January 2013 : 105

Percentage of girls aged 15 who:

	achieved A*-C in English/Welsh	achieved A* C in Maths	achieved A*-C in Science	Average English/Welsh Points per pupil	Average Maths points per pupil	Average Science points per pupil
School 2012/13	77	63	69	42	59	39
LA Area 2012/13	75	60	61	42	37	42
Wales 2012/13	75	51	78	41	55	41
School 11/12/13	79	66	73	43	40	40
School 10/11/12

(1) For details on approved qualifications, point scores and contribution to thresholds, please see the Database for Approved Qualifications in Wales (DAQW) at <http://www.daw.org.uk/>

(2) For information about which syllabuses are included in each subject area see Notes for Guidance.

(3) Average capped with point scores are calculated using the best 6 results.

(4) Entry Level Qualification.

(5) For the first SSSP this definition will be replaced with the percentage of pupils aged 15 leaving education with no qualifications as defined under the National Performance Indicator EDU002.

(6) Used for all Free School Meal benchmarking tables.

(7) Used in the calculation of the Core Data Set statistical family.

.. Data not available.

Disgyblion 15 oed

	Canran y disgyblion 15 oed a:		Canran y bachgyn 15 oed a:		Canran y merched 15 oed a:	
	enllodd un GLM (4) neu ragor yn urig	yn gadael addysg amser-lawn heb unrhyw gymhwysler (5)	enllodd un GLM (4) neu ragor yn urig	yn gadael addysg amser-lawn heb unrhyw gymhwysler (6)	enllodd un GLM (4) neu ragor yn urig	yn gadael addysg amser-lawn heb unrhyw gymhwysler (5)
Ysgol 2012/12	0	0.0	0	0.0	0	0.0
Ardal ALI 2012/13	1	0.0	0	0.0	1	0.0
Cymru 2012/13	1	0.3	1	3.4	1	0.2
Ysgol 11/12/12	0	0.0	0	0.0	0	0.0
Ysgol 10/11/12	0	0.0	0	0.0	0	0.0

Disgyblion 17 oed

	Nifer y disgyblion 17 oed a oedd ar y gofrestr yn Ionawr 2013: 85		Nifer y bachgyn 17 oed a oedd ar y gofrestr yn Ionawr 2013: 44		Nifer y merched 17 oed a oedd ar y gofrestr yn Ionawr 2013: 41	
	Canran y disgyblion 17 oed a gofrestrodd am gyfeirio deiseu yn gyfeirio i 2 lefel A ac yn ennill y trothwy Lefel 3	Sgôr uwyrthod cyfarflog eang am bob disgybl 17 oed	Canran y disgyblion 17 oed a gofrestrodd am gyfeirio deiseu yn gyfeirio i 2 lefel A ac yn ennill y trothwy Lefel 3	Sgôr uwyrthod cyfarflog eang am bob disgybl 17 oed	Canran y disgyblion 17 oed a gofrestrodd am gyfeirio deiseu yn gyfeirio i 2 lefel A ac yn ennill y trothwy Lefel 3	Sgôr uwyrthod cyfarflog eang am bob disgybl 17 oed
Ysgol 2012/13	100	931	100	1007	100	953
Ardal ALI 2012/13	96	913	87	678	96	943
Cymru 2012/13	98	1007	80	760	87	849
Ysgol 11/12/13	100	998	89	867	100	1003
Ysgol 10/11/12	98	888	86	857	100	888

(1) I gael manylion ar gymhwyslerau sydd wedi'u tynnu o'r rhestr, eghir pwyllau a chyfarflog ar y trothwy, gweler y Sbonit Ddata Cymhwyslerau Cymuneddy Cymru (DACW) yn <http://www.dacw.org.uk/>

(2) Mae manylion ynghyd â phas feysydd llefel sydd yn rhoi'r pwr ar gae yn y nodiadau cyferbyddedd.

(3) Cyfrifir y sgôr uwyrthod cyfarflog eang wedi'i gapio gan ddefnyddio'r 3 calnyriad gorau.

(4) Camlinosier Lefel Mynediad.

(5) Yn yr SSSP Ierbynol, byddan yn cynnwys y canran a nodwyd yn 15. hae yn ymdded addysg llawn amser gyda dim gymhwysler cyfeirio deiseu yn dilyn ddiwyd y Dangosydd Perfformio Cenedlaethol (EDU002).

(6) Defnyddir ar gyfer holl dablau treiglenni prysau am ddim.

(7) Defnyddir i gyfrifo y luo'uoedd ychydig yn y Setau Data Craidd.

Pupils aged 15

	Percentage of pupils aged 15 who:		Percentage of boys aged 15 who:		Percentage of girls aged 15 who:	
	achieved one or more ELQ (4) only	Left full time education without a qualification (6)	achieved one or more ELQ (4) only	Left full time education without a qualification (5)	achieved one or more ELQ (4) only	Left full time education without a qualification (5)
School 2012/13	0	0.0	0	0.0	0	0.0
LA Area 2012/13	1	0.0	0	0.0	1	0.0
Wales 2012/13	1	0.3	1	0.4	1	0.2
School 11/12/13	0	0.0	0	0.0	0	0.0
School 10/11/12	0	0.0	0	0.0	0	0.0

Pupils aged 17

	Number of pupils aged 17 who were on roll in January 2013: 85		Number of boys aged 17 who were on roll in January 2013: 44		Number of girls aged 17 who were on roll in January 2013: 41	
	Percentage of 17 year old pupils entering a volume equivalent to 2 A levels who achieved the Level 3 threshold	Average wider points score for pupils aged 17	Percentage of 17 year old pupils entering a volume equivalent to 2 A levels who achieved the Level 3 threshold	Average wider points score for pupils aged 17	Percentage of 17 year old pupils entering a volume equivalent to 2 A levels who achieved the Level 3 threshold	Average wider points score for pupils aged 17
School 2012/13	100	981	100	1027	100	963
LA Area 2012/13	98	913	97	879	99	946
Wales 2012/13	98	807	95	758	97	840
School 11/12/13	100	999	99	987	100	1205
School 10/11/12	98	969	98	937	100	989

(1) For details on approved qualifications, point scores and contribution to thresholds, please see the Database for Approved Qualifications in Wales (DAQW) at <http://www.dafw.gov.wales>

(2) For information on which syllabuses are included in each subject area see Notes for Guidance.

(3) Average capped wider point scores are calculated using the best 8 GCSE results or the vocational equivalent.

(4) Entry Level Qualification.

(5) For the first SSSP this definition will be replaced with the percentage of pupils aged 15 leaving education with no qualifications as defined under the National Performance Indicator EDUW102.

(6) Used for a) Free School Meal benchmarking tables.

(7) Used in the calculation of the Core Data Set statistical family.

.. Data not available.

Ysgol David Hughes
Math o Ysgol: Comprehensive 11-18
Iaith yr Ysgol: Bilingual

SSSP 2013
Rhif ALI/Ysgol 660 / 4028

Nifer o Unedau AAA/Dosbarthiadau Arbennig: 0

Nifer y disgyblion ar y gofrestr ym mlwyddyn 11: 201

Canran y disgyblion o oedran ysgol gorfodol a hawl i gael prydau am ddim yn 11/12/13⁽⁶⁾: 11.2

Canran y disgyblion o oedran ysgol gorfodol sy'n byw yn un o'r 20% ardal mwyaf amddifad Cymru gan ddefnyddio Mynegrif Amddifadedd Lluosog Cymru (MALIC) 2011⁽⁴⁾: 1.5

Canran y disgyblion o oedran ysgol gorfodol sydd naill yn newydd i'r iaith Saesneg (neu'r Gymraeg fel bo'n briodol), ar lefel caffael cynnar neu yn datblygu cymhwysedd 2012/13⁽⁷⁾: 0.3

Canran y disgyblion o oedran gorfodol sy'n derbyn gweithredu gan yr ysgol a mwy neu â datganiad anghenion addysgiadol arbennig (AAA) 11/12/13⁽⁷⁾: 10.6

Canran y disgyblion 15 oed ar y gofrestr AAA: 16.7

Cynigr y Fagloriseth Cymru: Yes

Lefel o Fagloriseth Cymru a gynigr:

Lefel uwch o'r gyfer disgyblion 6-10	Lefel canolradd o'r gyfer disgyblion 11-15	Lefel sylfaen ar gyfer disgyblion 16-19	Lefel canolradd ar gyfer disgyblion 19-24 oed	Lefel sylfaen ar gyfer disgyblion 25 oed a hŷ
Yes	No	No	Yes	Yes

(1) I gael manylion ar gynhwysion sydd wedi'u cymeradwyo, spôr pwyntiau a dilyniadau a y throthwy, gweler y Cofrestr Ddeta Cymwysa eu Cymeradwy Cymru (DAQW) yn <http://www.cagw.org.uk/>

(2) Mae nifer ym 11-18 yn gysylltiedig â hysbysu bod oedolion yn gael eu nodweddau syfarnwyd.

(3) Cylfrifi ysgol pwyntiau cyntafol eang wedi'i gael gan nidatmyrddolli canlyniad gorau.

(4) Cynhwysion Lefel Mynediad.

(5) Yn gysylltiedig â diffinir Dangosydd Perfformiad Genedlaethol (DUV02).

(6) Defnyddir ar gyfer holl ddatau melnodol prydau am ddim.

(7) Defnyddir i gysylltiedig y datau ysgol yn y Setiau Data Creids.

... Data odim ar gael

Ysgol David Hughes

School Type: Comprehensive 11-18

Linguistic Delivery: Bilingual

SSSP 2013

LA/School No. 660 / 4026

Number of SEN Unit/Special Classes: 0

Number of Pupils on Roll in NCY 11: 201

Percentage of compulsory school age pupils eligible for FSM 11/12/13⁽¹⁾: 11.2

Percentage of compulsory school age pupils who live in an area classed as in the 20% most deprived parts of Wales using the Welsh Index of Multiple Deprivation (WIMD) 2011⁽⁷⁾: 1.5

Percentage of compulsory school age pupils who are either new to the English language (or Welsh where relevant), at an early acquisition stage or developing competence 2012/13⁽⁷⁾: 0.3

Percentage of compulsory school age pupils subject to school action plus or with a statement of special educational needs (SEN) 11/12/13⁽⁷⁾: 10.6

Percentage of 15 year old pupils on SEN register: 16.7

Welsh Baccalaureate Offered: Yes

Level of Welsh Baccalaureate Offered:

Advanced for post-16 pupils	Intermediate for post-16 pupils	Foundation for post-16 pupils	Intermediate for pre-18 pupils	Foundation for pre-16 pupils
Yes	No	No	Yes	Yes

(1) For details on approved qualifications, point scores and contribution to thresholds, please see the Database for Approved Qualifications in Wales (DAQW) at <http://www.cqpw.org.uk/>

(2) For information about which syllabuses are included in each subject area see Notes for Guidance.

(3) Average capped value added scores are calculated using the best 3 GCSE results or the vocational equivalent.

(4) Entry Level Qualification.

(5) As defined under the National Performance Indicator EDL002.

(6) Used for all Free School Model benchmarking tables.

(7) Used in the calculation of the Core Data Set statistical family.

.. Data not available.

YSGOL DAVID HUGHES

Crynodeb o ganlyniadau Asesiadau Cwricwlwm Cenedlaethol disgyblion yn yr ysgol (2013) ac yn genedlaethol (2012) ar ddiwedd Cyfnod Allweddol 3 fel enran o'r rhai oedd yn gyswys i'w hasesu

		N	D	NC01	NC02	NC03	1	2	3	4	5	6	7	8	EP	5+	6+	7+
Santua	Ysgol 2013	1	0	0	0	0	0	0	0	7	30	36	13	2	0	37	51	15
	Genedlaethol 2012	0	-	0	0	0	1	4	15	41	78	9	1	-	76	75	10	
Cymraeg	Ysgol 2013	0	0	0	0	0	0	1	5	12	35	15	1	0	94	21	16	
	Genedlaethol 2012	0	-	0	0	0	0	2	12	43	31	9	1	-	84	41	10	
Mathemateg	Ysgol 2013	1	0	0	0	0	0	4	6	29	33	25	4	0	89	62	29	
	Genedlaethol 2012	0	-	0	0	0	1	4	13	37	30	13	2	-	87	50	20	
Gorsoddeu	Ysgol 2013	1	0	0	0	0	0	0	6	36	39	21	0	0	94	55	21	
	Genedlaethol 2012	0	-	0	0	0	1	2	12	40	32	12	1	0	83	42	13	
Cymraeg All Eidd	Ysgol 2013	0	0	0	0	0	0	0	10	25	27	25	10	0	87	43	35	
	Genedlaethol 2012	1	1	0	0	0	1	7	7	20	41	23	5	0	7	60	28	5
Ialaith Drwsar Fawr	Ysgol 2013	1	0	0	0	0	0	0	0	12	36	39	12	0	0	87	51	12
	Genedlaethol 2012	1	1	0	0	0	1	1	3	16	38	28	8	0	-	76	36	8
Byluniu, Ysychaeth	Ysgol 2013	1	0	0	0	0	0	1	4	40	39	16	0	0	95	55	16	
	Genedlaethol 2012	1	0	0	0	0	0	1	2	12	46	31	7	0	-	84	38	7
Technoleg Gwybodaeth	Ysgol 2013	1	0	0	0	0	0	0	0	6	32	45	17	0	0	94	67	17
	Genedlaethol 2012	0	0	0	0	0	0	1	7	11	43	34	8	0	0	86	43	5
Santua	Ysgol 2013	1	0	0	0	0	0	0	2	8	30	31	26	3	0	90	60	29
	Genedlaethol 2012	1	0	0	0	0	0	1	3	14	43	30	10	1	0	81	41	11
Harwyddiaeth	Ysgol 2013	1	0	0	0	0	0	0	1	9	40	22	12	1	0	88	48	16
	Genedlaethol 2012	1	0	0	0	0	0	1	3	15	39	20	11	1	-	81	42	12
Celf	Ysgol 2013	1	0	0	0	0	0	0	0	6	38	43	15	0	0	91	55	15
	Genedlaethol 2012	1	0	0	0	0	0	1	2	11	45	20	10	1	-	86	4	11
Cestonau	Ysgol 2013	1	0	0	0	0	0	0	1	8	41	36	15	1	0	97	50	14
	Genedlaethol 2012	1	0	0	0	0	0	0	2	13	54	24	5	1	0	85	31	7
Addysg Gelfyddyd	Ysgol 2013	1	0	0	0	0	0	0	0	6	29	45	15	5	0	53	64	19
	Genedlaethol 2012	1	0	0	0	0	0	0	2	11	51	25	7	1	-	84	23	8
Addysg Grebïddol	Ysgol 2013	1	0	0	0	0	0	0	0	5	43	30	20	0	0	93	50	20
	Genedlaethol 2012																	

Dangosydd Pwnc Creadid *	Nifer Brechynn	Nifer Brechynn DDC	% Brechynn DDC	Nifer Ddrosedd	Nifer Ddrosedd DDC	% Ddrosedd DDC	Cwmwl Bwlgynn a Mersod
Ysgol 2013	100	78	78	79	69	87	82.2
Genedlaethol 2012	0			0			72

- N** Ni ddigwydd yr eiddau hysbysu hysbysu
 - D** Disgwyl wrd'u heithrio neu daluymlyso o dan Ailr. 112 i 116 o Ddaliad Addysg 2002
 - NC01** Ddaliad 1 Cwricwlwm Cenedlaethol
 - NC02** Ddaliad 2 Cwricwlwm Cenedlaethol
 - NC03** Ddaliad 3 Cwricwlwm Cenedlaethol
 - EP** Disgwyl yn dangos perfformiad Llyfrnaddol
 - Dim gan mlyn yn ôl
 - +** Mae'r ffioyr yn llai na phump neu ni ellir ei gyswys gan ei fod yn gyfnewidol
- Dangosydd Pwnc Creadid** Y gwaso a ddigwyddion yn gyswysd a hysbysu o dan Ailr. 112 i 116 o Ddaliad Addysg 2002, neu Smaeg, Muluwrn a p'n Gwybodaethu mewn cyfnewid.

Solwer: mae'n bwrh i gylfawm y mifau beidic bod yn 100% o adus rawddio

YSGOL DAVID HUGHES

Summary of National Curriculum Assessment results of pupils in the school (2013) and nationally (2012) at the end of Key Stage 3 as a percentage of those eligible for assessment.

		N	D	NC01	NC02	NC03	1	2	3	4	5	6	7	8	EP	5+	6-	7-
English	School 2013	1	0	0	0	0	0	0	5	9	36	36	13	2	0	87	51	13
	National 2012	0	-	0	0	0	0	1	4	13	41	28	9	1	-	79	38	10
Welsh	School 2013	0	0	0	0	0	0	0	1	5	43	35	15	1	0	94	51	16
	National 2012	0	*	0	*	*	0	3	13	43	31	9	1	*	84	41	10	
Mathematics	School 2013	1	0	0	0	0	0	0	4	6	27	33	25	4	0	89	62	26
	National 2012	0	-	0	0	0	0	1	4	13	32	30	18	3	-	52	30	20
Science	School 2013	1	0	0	0	0	0	0	0	6	36	37	21	0	0	94	58	21
	National 2012	0	-	0	0	0	0	1	2	13	40	32	12	1	0	85	45	13
Welsh Second Language	School 2013	0	0	0	0	0	0	0	5	10	25	27	25	10	0	87	62	15
	National 2012	1	1	1	1	1	1	2	7	20	41	23	5	0	-	69	23	5
Modern Foreign Language	School 2013	1	0	0	0	0	0	0	0	13	36	39	12	0	0	57	51	12
	National 2012	1	1	1	1	1	1	1	5	16	28	28	8	0	-	71	56	8
Design and Technology	School 2013	1	0	0	0	0	0	0	1	4	40	35	16	0	0	95	55	16
	National 2012	1	0	0	0	0	0	1	2	12	46	31	7	0	-	54	38	7
Information Technology	School 2013	1	0	0	0	0	0	0	0	6	37	45	17	0	0	94	62	17
	National 2012	0	0	0	0	0	0	1	2	11	43	34	9	0	0	66	43	9
History	School 2013	1	0	0	0	0	0	0	2	3	30	31	26	3	0	90	50	29
	National 2012	1	0				0	1	3	14	40	30	10	-	-	51	41	11
Geography	School 2013	1	0	0	0	0	0	0	1	9	40	32	12	4	0	88	48	16
	National 2012	1	0				0	1	3	13	39	30	11	1	-	51	42	12
Art	School 2013	1	0	0	0	0	0	0	0	6	38	41	15	0	0	94	56	15
	National 2012	1	0				0	1	2	11	45	30	10	1	-	85	41	11
Music	School 2013	1	0	0	0	0	0	0	1	8	41	36	13	1	0	91	50	14
	National 2012	1	0				0	0	2	13	34	34	6	1	0	65	41	7
Physical Education	School 2013	1	0	0	0	0	0	0	0	6	29	45	16	3	0	93	54	19
	National 2012	1	0				0	0	2	14	31	25	7	1	-	84	33	8
Religious Education	School 2013	1	0	0	0	0	0	0	0	6	43	30	20	0	0	93	50	20
	National 2012																	

Core Subject Indicator *	Number of Boys	Number Boys CSI	% Boys CSI	Number of Girls	Number Girls CSI	% Girls CSI	Percentage Boys and Girls
School 2013	100	78	78	75	69	92	82.12
National 2012	0			0			73

- N Pupil not awarded a level for reasons other than disapplication
 - D Pupil disappled under Section 113 to 116 of the Education Act 2005
 - NC01 National Curriculum Outcome 1
 - NC02 National Curriculum Outcome 2
 - NC03 National Curriculum Outcome 3
 - EP Pupil showing Exceptional Performance
 - Not quite zero
 - * Figure is less than five cannot be given for reasons of confidentiality
- Core Subject Indicator Percentage of pupils achieving Level 4 or above in English or Welsh (first language), Mathematics and Science in combination

Please note that because of rounding, figures may not always add up to 100%

Mae'r adroddiad hwn yn defnyddio data 2013 ar gyfer gwybodaeth gymharol yr ALI a Chymru

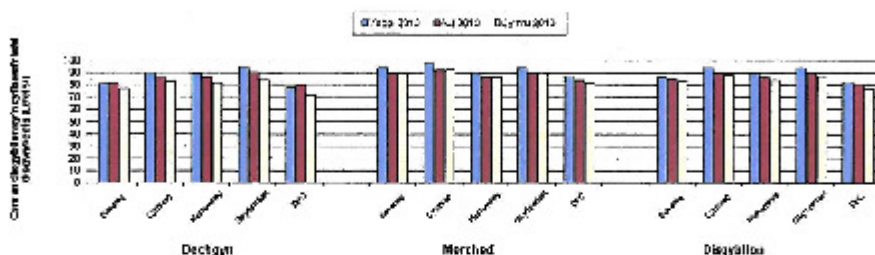
Ysgol David Hughes
Ynys Môn

Rhif yr ALI/Ysgol:6604028

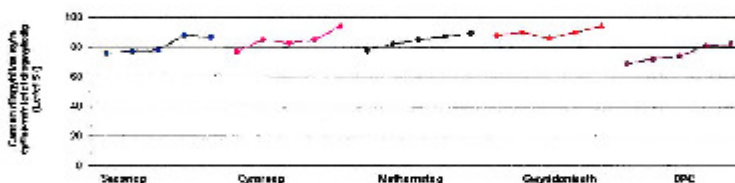
Gwybodaeth gymharol yr ysgol: Asesiadau'r Cwricwlwm Cenedlaethol 2013 gyda meincodi
Cyfnod Allweddol 3

Cannwyb bechgyn, merchod a disgyblion sy'n cyflawni'r lefel disgywiedig o leiaf (Lefel 5+):

	Bechgyn			Merched			Disgyblion		
	Ysgol 2013	ALI 2013	Cymru 2013	Ysgol 2013	ALI 2013	Cymru 2013	Ysgol 2013	ALI 2013	Cymru 2013
Saesneg	81	82	77	86	89	88	87	85	83
Cymraeg	91	97	85	86	92	92	84	89	88
Mathemateg	69	68	80	80	79	88	81	86	84
Gwyddonias	64	61	84	94	90	90	84	90	87
DPC	78	80	72	87	84	82	82	81	77



Perfformiad yr ysgol dros amser (2009 - 2013)



Gwybodaeth gyd-destunol

Wedi meincodi yn eidd yr ysgol 3 chwarter debyg o ddisgyblion sy'n gwneud ysgol Pryda Ysgol am Ddiwrnod.

Sut i gyd-ddestunol yr ysgol yn yfyrddu lefel. Mae meincodi'n darparu'r cwybodaeth.

Chwarter 1: Mwy ysgol ymbith y 25% uchaf

Chwarter 2: Mwy ysgol ymbith y 50% uchaf ond nid y 25% uchaf

Chwarter 3: Mwy ysgol ymbith y 50% uchaf ond nid y 25% uchaf

Chwarter 4: Mwy ysgol ymbith y 25% leiaf

Grŵp Pryda: Ysgol am Ddiwrnod

10% neu hysgus lefel at 18% yn gyfnewid ysgol Pryda Ysgol am Ddiwrnod

	Chwarter 4	Chwarter 3	Chwarter 2	Chwarter 1	Chwarter Uchaf	Chwarter 1
Saesneg	81	87	88	86	80	83
Cymraeg	91	97	85	86	92	88
Mathemateg	69	68	80	80	79	88
Gwyddonias	64	61	84	94	90	90
DPC	78	80	72	87	84	82

Mae'r meincodi wedi cael eu cyflwyno gan ddefnyddio yfyrddu lefel mwy ysgol am Ddiwrnod.

Nodiadau:

- Mae'r data ar gyfer Cymraeg yn cyfeirio at ysgol Cymraeg, nid ysgol yr iaith.
- DPC = Ddeddf Pryda Cwled. Lefelau DPC, mae'r data yn seiliedig ar yfyrddu lefel 5+ yn gyfnewid mewn Mathemateg a Gwyddonias ond nid ysgol Cymraeg neu Saesneg i'w gynnwys.
- Os nad oes unrhyw ddisgyblion yn ysgol i'w hysoddi mewn pwr ar gyfer bywyd ysgol, cerdded byrd ysgol yn hysoddi ddeddf byrd ysgol yfyrddu lefel.

This report uses data for 2013 for LA and Wales comparative information

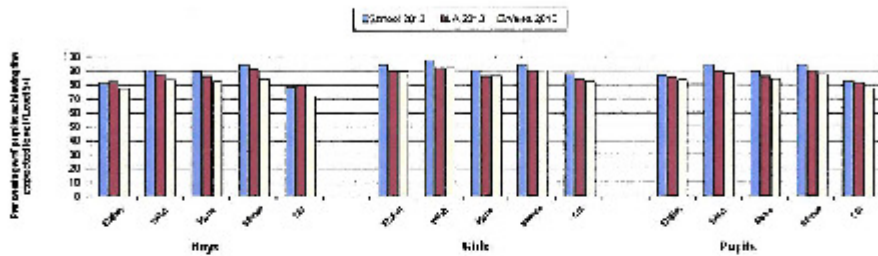
Ysgol David Hughes
Isle of Anglesey

LA/School no: 660/4028

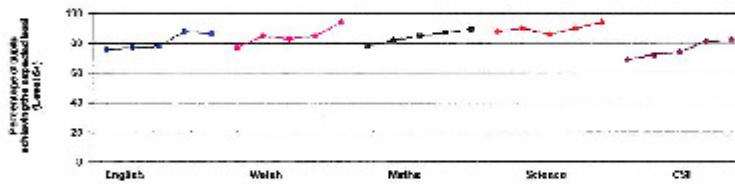
School comparative information: National Curriculum Assessments 2013 with benchmarking
Key Stage 3

Percentage of boys, girls, and pupils achieving at least the expected level (Level 5+)

	Boys			Girls			Pupils		
	School 2013	LA 2013	Wales 2013	School 2013	LA 2013	Wales 2013	School 2013	LA 2013	Wales 2013
English	87	82	77	86	89	88	87	85	83
Welsh	90	87	83	86	89	82	88	88	88
Maths	88	86	82	85	88	88	89	88	84
Science	94	91	84	94	90	90	94	93	87
CSL	78	80	72	87	84	82	82	81	77



School Performance over time (2009 - 2013)



Contextual Information

Headmarked equalised schools with a similar percentage of pupils eligible for free school meals

School's results shown in grey boxes, Contextual findings refer to...

Quarter 1 School is in the top 25 per cent.

Quarter 2 School is in the top 50 per cent but not in the top 25 per cent.

Quarter 3 School is in the bottom 50 per cent but not the bottom 25 per cent.

Quarter 4 School is in the bottom 25 per cent.

Free School Meal Group

More than or equal to 10 per cent and up to 15 per cent eligible for FSM

	Quarter 4	Lower Quartile	Quarter 3	Median	Quarter 2	Upper Quartile	Quarter 1
English	87	85	87	88		89	90
Welsh	90	89		92		95	96
Maths	88	85		88	89		90
Science	94	90		92		93	94
CSL	78	84	82	83		85	86

The benchmarks have been calculated using a three year average for Free School Meal data.

Notes:

1. Figures for Welsh refer to attainment in Welsh first language only.

2. CSL = Core Subject Level Indicator. To achieve the CSL a pupil must achieve at least the expected level 5+ in both Mathematics and Science and either English or Welsh first language.

3. If there were no pupils eligible for assessment in a particular year, the graph will discontinue and show a gap for that year.

This report uses data for 2013 for LA and Wales comparative information

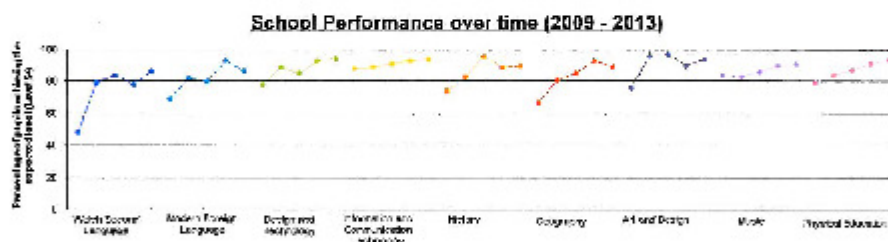
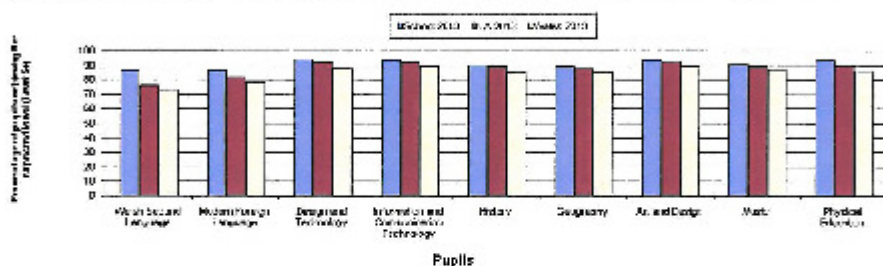
Ysgol David Hughes
Isle of Anglesey

LAISchool no: 860/4028

School comparative information: National Curriculum Assessments 2013 with benchmarking
Key Stage 3

Percentage of pupils achieving the expected level (Level 4+)

	Boys			Girls			Pupils		
	School 2013	A 2013	Wales 2013	School 2013	A 2013	Wales 2013	School 2013	A 2013	Wales 2013
Welsh Second Language	85	72	61	85	81	82	87	70	73
Modern Foreign Language	80	79	71	91	85	86	87	82	78
Design and Technology	84	88	73	85	84	83	84	86	85
Information and Communication Technology	83	81	86	81	84	83	84	82	80
History	85	87	80	86	83	80	86	80	85
Geography	87	85	80	87	81	88	88	78	80
Art and Design	82	82	83	86	86	85	84	88	80
Music	87	85	83	91	82	82	91	80	87
Physical Education	96	95	88	90	81	87	93	80	80



Contextual Information

Benchmarked against schools with a similar percentage of pupils eligible for free school meals. School's results shown in greyed boxes. Column headings refer to...

- Quarter 1: School is in the top 25 per cent.
- Quarter 2: School is in the top 50 per cent but not the top 25 per cent.
- Quarter 3: School is in the bottom 50 per cent but not the bottom 25 per cent.
- Quarter 4: School is in the bottom 25 per cent.

Free School Meal Group:
More than or equal to 10 per cent and up to 15 per cent eligible for FSM.

	Quarter 4	Lower Quintile	Quarter 3	Median	Quarter 2	Upper Quintile	Quarter 1
Welsh Second Language		70		75		84	87
Modern Foreign Language		80		85	87		85
Design and Technology		92		94	94		95
Information and Communication Technology		81		84	84		81
History		85		85	80		82
Geography		87		82	83		85
Art and Design		82		82	84		80
Music		83	87		93		84
Physical Education		88		87		82	93

The benchmarks have been calculated using a three-year average for Free School Meal data.

Notes:

- 1. If there were no pupils eligible for assessment in a subject for a particular year, the graph will discontinue and show a gap for that year.

TARGEDAU CYFLAWNIAD - MEDI 2013

* Ar gyfer Cymraeg (CA3), nodirch y nifer sydd yn dilyn 'Cymraeg Iaith Gymraeg' yn y colofn 'Nifer' ar gyfer y lair rhyngwladol.

CA3	Targedau Rhyngwladol 2012/2013				Targedau Rhyngwladol 2013/2014				Targedau Rhyngwladol 2014/2015				Targedau Rhyngwladol 2015/2016			
	Nifer Dyfodol 2012/2013	% Targed Iaith 3- 2012/2013	Cyflwyniad Ysgol 2012/2013	Targedau Sifod	Nifer Dyfodol 2013/2014	% Targed Iaith 3+ 2013/14	Targedau Sifod	Nifer Dyfodol 2014/2015	% Targed Iaith 3+ 2014/15	Targedau Sifod	Nifer Dyfodol 2015/2016	% Targed Iaith 3+ 2015/16	Targedau Sifod			
Cymraeg (Iaith Gymraeg) *	83	84%	94%		114	86%		117	87%		123	88%				
Saesnog	179	83%	87%		178	87%		186	88%		186	88%				
Maldenau	179	83%	89%		165	92%		178	92%		186	93%				
Gwyddorwch	179	93%	94%		165	90%		178	91%		186	93%				
Dangosydd Iynewn Craidd (DPC)	179	73%	82%		165	83%		178	84%		186	85%				
DPC - Reolgyr	100	77%	78%		85	79%		87	82%		99	83%				
DPC - Menter	79	80%	87%		80	86%		91	86%		87	87%				
CA4	Canlyniadau Rhyngwladol 11-2012/2013				Targedau Rhyngwladol 11-2013/2014				Targedau Rhyngwladol 11-2014/2015				Targedau Rhyngwladol 11-2015/2016			
	Nifer SBU 2012/2013	% Targed 2012/2013	Canlyniadau Ysgol 2012/2013	Targedau Sifod	Nifer SBU 2013/2014	% Targed 2013/2014	Targedau Sifod	Nifer SBU 2014/2015	% Targed 2014/2015	Targedau Sifod	Nifer SBU 2015/2016	% Targed 2015/2016	Targedau Sifod			
Trothwy Lefel 2	201	84%	89%		162	94%		180	87%		165	89%				
Trothwy Lefel 1	201	100%	99%		162	98%		180	98%		165	99%				
Trothwy Lefel 2+	201	68%	59%		162	67%		180	70%		165	71%				
Dangosydd Pysieu Craidd (DPC)	201	66%	53%		162	65%		180	63%		165	65%				
DPC - Bechgyn	97	62%	53%		72	66%		101	61%		85	62%				
DPC - Merched	104	70%	53%		90	64%		79	65%		80	67%				
% yn gadael yn ddi-gyntwysu	201	0%	0.00%		162	0%		180	0%		165	0%				
% absenoldeu anrwydoddedig	201	0%	0.34%		162	0%		180	0%		165	0%				

Arwyddwyd: *H. S. Williams*

(Penneith)

Arwyddwyd: *S. J. Davies*

(Cauwr/Cyflwr y Llywodraethwyr)

YSGOL DAVID HUGHES
CYFRIFON TERFYNOL 2012/2013

GWARIANT/EXPENDITURE	Gwariant Cyflideb
Gweithwyr/Employees:	
Athrawon/Teachers	£ 3,317,220.23
Staf Cefnogaol (Misc)/Support Staff (Monthly)	£ 317,730.25
Cirio Ddi-dal	£ 2,883.40
Costau Recrwtio/Recruiting Costs	£ 3,110.31
Athrawon Llarw/Supply Teachers	£ 116,149.89
Cyrsiau Cwnewwm Amgen	£ 48,948.26
ITMS/Inset	£ 45,130.04
Lwfans y Pen/Capitation Allowance	£ 158,613.97
Adeiladau/Buildings:	
Cymal a Chudw /Repair and Maintenance	£ 17,926.70
Dodrefn/Furniture	£ 1,995.95
Trydan/Electricity	£ 53,064.22
Dwr/Water	£ 10,414.47
Nwy/Gas	£ 29,166.34
Trefni/Rates	£ 101,248.00
Iechyd a Ddiogelwch/Health & Safety	£ 710.48
Larw/Alarm	£ 2,888.80
Other Ymladd Tân/Fire Equipment	£ 476.00
Defnyddiau Gofalwr/Caretaker Materials	£ 2,309.17
Gwasanaethau a Chyflenwadau/Supplies and Services:	
Costau Arholiadau/Examination Costs	£ 125,528.42
Gweinyddu/Administration	£ 10,216.27
Ffôn/Telephone	£ 5,810.56
Post/Postage	£ 7,902.52
Cymorth Cyntaf/First Aid	£ 248.72
Teithio/Travelling	£ 3,162.98
Gwasanaethau a Chyflenwadau-allanol	
Supplies and Services-External	
Gwasanaeth Cerdd/Music Service	£ 12,801.08
Cefnogaeth Cymal/Cymal Support	£ 53,457.56
Cytundeb Glanhau/Cleaning Contract	£ 103,762.00
Cytundeb Biniau/Bins Contract	£ 4,612.74
Cymal Tiri/Ground Maintenance	£ 16,627.00
Prydau Ysgol/School Meals	£ 41,828.00
Cymal a Chudw - Gweinyddu / Repair + Maintenance (Admin)	£ 21,580.00
Cymal a Chudw(Ariannu Teg) Maintenance (Fair Funding)	£ 37,949.58
Personel a Chyflogau/Personel+Salaries	£ 12,957.00
Cyngor Cyllidol/Financial Advice	£ 5,819.00
Tulnau + Incwm/Income+Payments	£ 1,242.00
Integreiddio	£ 387,042.00
Arian Wrth Gefn/Reserves	
CYFANSWM GWARIANT/TOTAL EXPENDITURE	£ 5,082,534.32

YSGOL DAVID HUGHES
CYFRIFON TERFYNOL 2012/2013

Gwir Incwm/Actual Income:		
Incwm Giesdiadau/Lettings-Income	-£	3,390.31
Incwm Arall/Other Income	-£	82,525.56
Grant GTCW	-£	10,717.46
Incwm BAC	-£	17,752.00
Incwm Llarnw 14/16	-£	3,402.00
Incwm Cefnogi Cynhwysiad	-£	59,150.00
Incwm Rhwydwaith 14-19 Cynulliad	-£	74,075.00
Cyfraniadau Balansau Cyllideb	£	-
GCAHGBST GRANT	-£	74,079.00
Llog/Interest	-£	6,651.56
CYFANSWM INCWM/TOTAL INCOME	-£	332,542.89
GWARIANT NET/NET EXPENDITURE	£	4,749,991.43
DYRANIAD/ALLOCATION 2012/2013		£ 4,759,276.00
GWARIANT NET/NET EXPENDITURE		£ 4,749,991.43
BALANS CYLLIDEB 2012/2013/BALANCE 2012/2013 BUDGET	£	9,284.57

Adroddiad Cryno Presenoldeb



PAPUR/PAPÏR
E

2. Canran presenoldeb diwybion sydd ar y golffwr a ddiswybion sy'r gadael o oed ysgol arffodol yn unig ym rhob sesiwn bosibl.

Oedran Dyddiad Geni	Yn bresennol/Gweithgaredd addysgol gymresolwy (%)			Absenoldebau a chatalad (%)			Absenoldebau heb gantald (%)			Gorffod caur ysgol (gig yn rhannol) (cod Y) (%)			Sesiynau nad ydynt ar yr amserlen ar gyfer diwybion nad ydynt o oedran ysgol gorffodol (cod X) (%)		
	B	M	Cyfanswm	B	M	Cyfanswm	B	M	Cyfanswm	B	M	Cyfanswm	B	M	Cyfanswm
15 1/9/96 - 31/8/97	91.0	90.9	90.9	8.1	8.2	8.2	0.9	0.9	0.9	0.0	0.0	0.0	0.0	0.0	0.0
14 1/9/97 - 31/8/98	95.0	94.2	94.6	4.8	5.7	5.4	0.0	0.1	0.1	0.0	0.0	0.0	0.0	0.0	0.0
13 1/9/98 - 31/8/99	94.7	94.0	94.4	5.3	5.0	5.1	0.0	1.0	0.4	0.0	0.0	0.0	0.0	0.0	0.0
12 1/9/99 - 31/8/00	95.3	94.8	95.0	4.7	5.2	4.9	0.0	0.0	0.0	0.0	0.0	0.0	0.0	0.0	0.0
11 1/9/00 - 31/8/01	95.3	95.9	95.6	4.5	4.1	4.3	0.2	0.0	0.1	0.0	0.0	0.0	0.0	0.0	0.0
10 neu'n neu'n ieu hwyraeth	0.0	0.0	0.0	0.0	0.0	0.0	0.0	0.0	0.0	0.0	0.0	0.0	0.0	0.0	0.0
Cyfanswm o ddiwybion	94.2	93.8	94.0	5.6	5.7	5.7	0.9	0.4	0.3	0.0	0.0	0.0	0.0	0.0	0.0



Attendance Summary Report

2. Attendance percentage of possible sessions for pupils on roll and leavers of compulsory school age only.

Age	Date of Birth	Present/Approved Educational Activity (%)			Authorised absences (%)			Unauthorised absences (%)			Partial and forced school closure (code Y) (%)			Unmetabled sessions for non-compulsory school-aged pupils (code X) (%)		
		Boys	Girls	Total	Boys	Girls	Total	Boys	Girls	Total	Boys	Girls	Total	Boys	Girls	Total
15	15/9/98 - 31/8/97	91.0	90.9	90.9	0.1	0.2	0.2	0.9	0.9	0.9	0.0	0.0	0.0	0.0	0.0	0.0
14	15/9/87 - 31/8/98	91.0	94.2	94.8	4.8	5.7	6.4	0.0	0.1	0.1	0.0	0.0	0.0	0.0	0.0	0.0
13	15/9/98 - 31/8/99	94.7	94.0	94.4	5.3	5.0	6.1	0.0	1.0	0.4	0.0	0.0	0.0	0.0	0.0	0.0
12	15/9/99 - 31/8/00	95.3	94.8	95.0	4.7	5.2	4.9	0.0	0.0	0.0	0.0	0.0	0.0	0.0	0.0	0.0
11	15/9/00 - 31/8/01	95.3	95.9	95.6	4.6	4.1	4.3	0.2	0.0	0.1	0.0	0.0	0.0	0.0	0.0	0.0
10 or younger	15/9/01 or later	0.0	0.0	0.0	0.0	0.0	0.0	0.0	0.0	0.0	0.0	0.0	0.0	0.0	0.0	0.0
Total of all pupils		94.2	93.8	94.0	5.8	5.7	5.7	0.3	0.4	0.3	0.0	0.0	0.0	0.0	0.0	0.0