

**Disgyblion 15 oed**

**Nifer y disgyblion 15 oed a oedd ar y gofrestr yn Ionawr 2014 : 160**

**Canran y disgyblion 15 oed a:**

	gofrestrodd am oleisfun sybwystr	enillodd drothwy Lefel 1	enillodd drothwy Lefel 2	enillodd drothwy Lefel 2 gan gynnwys TGAU mewn Saesneg neu Gymraeg iaith geniaf a mathemateg	Dangosydd Pynciau Craidd (2)	Sgôr bwyntiau gyfarflog ahangach lesul disgybl wedi'i chapple (3)	Sgôr bwyntiau gyfarflog eang am bob disgybl
Ysgol 2013/14	103	99	90	60	57	379	663
Ardal ALI 2013/14	103	96	86	54	53	357	596
Cymru 2013/14	99	90	82	55	53	341	524
Ysgol 12/13/14	103	99	97	61	57	375	620
Ysgol 11/12/13	103	98	91	61	57	380	627

**Nifer y bechgyn 15 oed a oedd ar y gofrestr yn Ionawr 2014 : 71**

**Canran y bechgyn 15 oed a:**

	gofrestrodd am oleisfun sybwystr	enillodd drothwy Lefel 1	enillodd drothwy Lefel 2	enillodd drothwy Lefel 2 gan gynnwys TGAU mewn Saesneg neu Gymraeg iaith geniaf a mathemateg	Dangosydd Pynciau Craidd (2)	Sgôr bwyntiau gyfarflog ahangach lesul disgybl wedi'i chapple (3)	Sgôr bwyntiau gyfarflog eang am bob disgybl
Ysgol 2013/14	103	99	85	55	56	369	659
Ardal ALI 2013/14	99	90	81	53	52	341	559
Cymru 2013/14	99	80	76	51	49	326	427
Ysgol 12/13/14	103	90	81	58	55	365	614
Ysgol 11/12/13	103	90	75	55	53	352	605

**Nifer y merched 15 oed a oedd ar y gofrestr yn Ionawr 2014 : 89**

**Canran y merched 15 oed a:**

	gofrestrodd am oleisfun sybwystr	enillodd drothwy Lefel 1	enillodd drothwy Lefel 2	enillodd drothwy Lefel 2 gan gynnwys TGAU mewn Saesneg neu Gymraeg iaith geniaf a mathemateg	Dangosydd Pynciau Craidd (2)	Sgôr bwyntiau gyfarflog ahangach lesul disgybl wedi'i chapple (3)	Sgôr bwyntiau gyfarflog eang am bob disgybl
Ysgol 2013/14	103	99	94	61	57	387	701
Ardal ALI 2013/14	103	90	90	54	53	371	634
Cymru 2013/14	99	96	88	60	57	355	553
Ysgol 12/13/14	103	99	91	65	59	385	690
Ysgol 11/12/13	103	90	87	67	61	375	645

(1) Gaei manylion ar gybwystrerau sydd wedi'u nymrodwynu, sgôr pwyntiau a chyfranid at y trothwy, gweler y Gronfa Ddala Gyrrwyslerau Cymuneddy Cymru (DAGW) yn <http://www.dagw.org.uk/>

(2) Mae manylion ynghyd â phn fwytyd i'f ar sedd yn rhob pwr o ar gael yn y nodladdu cyfarwyddo.

(3) Cyfrin y sgôr bwyntiau gyfarflog eang wedi'i gapple gan ddefnyddio'r A eathlydied gorau.

(4) Gyrrwysler Lefel Mynodiad.

(5) Defnyddir ar gyfwr holl ddata, meirnoddi pryduau am ddim.

(6) Defnyddir ar gyfwr holl ddata, meirnoddi pryduau am ddim. Dangosid y dangosydd yna dim ond ar ysgolion awdredd prif. I'fwd.

(7) Nodwch mai onwadu y dangosydd yna yw'r ddogydon i'f ond a geidied arhidiad Gymraeg iaith Gymaf.

yn hysbich na chyfarwmin yn holl ddisgyblion 15 oed.

... Data ddim ar gael.

**Pupils aged 15**

**Number of pupils aged 15 who were on roll in January 2014 :160**

**Percentage of pupils aged 15 who:**

	entered at least one qualification	achieved the Level 1 threshold	achieved the Level 2 threshold	achieved the Level 2 threshold including a GCSE pass in English or Welsh first language and mathematics	Core Subject Indicator (2)	Average capped (3) wider points score per pupil	Average wider points score per pupil
School 2013/14	100	98	93	60	57	379	663
LA Area 2013/14	100	98	88	54	55	357	588
Wales 2013/14	98	94	82	66	52	341	524
School 12/13/14	100	98	87	61	57	375	663
School 11/12/13	100	98	81	61	57	368	627

**Number of boys aged 15 who were on roll in January 2014 : 71**

**Percentage of boys aged 15 who:**

	entered at least one qualification	achieved the Level 1 threshold	achieved the Level 2 threshold	achieved the Level 2 threshold including a GCSE pass in English or Welsh first language and mathematics	Core Subject Indicator (2)	Average capped (3) wider points score per pupil	Average wider points score per pupil
School 2013/14	100	98	85	59	59	389	659
LA Area 2013/14	98	94	81	55	52	341	559
Wales 2013/14	98	93	79	51	43	325	487
School 12/13/14	100	98	84	56	55	385	634
School 11/12/13	100	98	76	56	53	352	595

**Number of girls aged 15 who were on roll in January 2014 : 89**

**Percentage of girls aged 15 who:**

	entered at least one qualification	achieved the Level 1 threshold	achieved the Level 2 threshold	achieved the Level 2 threshold including a GCSE pass in English or Welsh first language and mathematics	Core Subject Indicator (2)	Average capped (3) wider points score per pupil	Average wider points score per pupil
School 2013/14	100	98	84	61	57	387	701
LA Area 2013/14	100	98	80	54	53	371	634
Wales 2013/14	98	96	86	60	67	355	558
School 12/13/14	100	98	81	65	69	385	690
School 11/12/13	100	98	87	67	61	379	685

(1) For details on approved qualifications, point scores and contribution to thresholds, please see the Database for Approved Qualifications in Wales (DAQW) at <http://www.daqw.org.uk/>

(2) For information about which syllabuses are included in each subject area see Notes for Guidance.

(3) Average capped wider point scores are calculated using the best 6 results.

(4) Entry Level Qualification.

(5) Used for all Free School Meal benchmarking tables. This indicator is only shown for mainstream secondary schools.

(6) Note that the denominator for this indicator is the number of 15 year olds who entered Welsh First Language, rather than the total number of 15 year olds.

.. Data not available.

**Disgyblion 15 oed**

Nifer y disgyblion 15 oed a oedd ar y gofrestr yn Ionawr 2014 : 160

Canran y disgyblion 15 oed a:

	enillodd A*-C mewn :					Pwyntiau cyfarbolog fesul disgybl :		
	Saesneg/ Cymraeg	Saesneg	Cymraeg (B)	Mathemateg	Gwyddonïaeth	Saesneg/ Cymraeg	Mathemateg	Gwyddonïaeth
Ysgol 2013/14	74	73	60	63	61	42	39	41
Ardal ALI 2013/14	69	65	72	60	60	39	35	45
Cymru 2013/14	87	86	74	82	82	39	38	47
Ysgol 12/13/14	70	67	62	60	76	41	40	41
Ysgol 11/12/13	68	64	61	71	71	40	40	40

Nifer y bechgyn 15 oed a oedd ar y gofrestr yn Ionawr 2014 : 71

Canran y bechgyn 15 oed a:

	enillodd A*-C mewn :					Pwyntiau cyfarbolog fesul disgybl :		
	Saesneg/ Cymraeg	Saesneg	Cymraeg (B)	Mathemateg	Gwyddonïaeth	Saesneg/ Cymraeg	Mathemateg	Gwyddonïaeth
Ysgol 2013/14	85	83	49	86	79	38	39	41
Ardal ALI 2013/14	61	56	64	64	60	37	36	42
Cymru 2013/14	88	88	64	81	80	38	38	45
Ysgol 12/13/14	61	58	49	73	75	38	40	41
Ysgol 11/12/13	58	55	49	73	70	38	40	40

Nifer y merched 15 oed a oedd ar y gofrestr yn Ionawr 2014 : 89

Canran y merched 15 oed a:

	enillodd A*-C mewn :					Pwyntiau cyfarbolog fesul disgybl :		
	Saesneg/ Cymraeg	Saesneg	Cymraeg (B)	Mathemateg	Gwyddonïaeth	Saesneg/ Cymraeg	Mathemateg	Gwyddonïaeth
Ysgol 2013/14	81	80	68	81	85	43	36	41
Ardal ALI 2013/14	77	73	75	57	61	42	36	47
Cymru 2013/14	76	75	82	68	85	41	37	49
Ysgol 12/13/14	79	76	73	86	77	43	39	41
Ysgol 11/12/13	78	74	74	66	75	43	40	40

(1) Tystiadau mewn ar gyfnewtiau sydd wedi'u cymeredu'n sgôr pwyntiau a chyfeirir at y th ddiwy, gweler y Gwnef Ddara Cymwysrnu Cymerscw Cymru (DACW) yn <http://www.daw.org.uk/>

(2) Mae manylion ynghyd â pha feysydd llafur sydd yn mheb pwr ar geel yn y nodiadau cyfarwyddyd.

(3) Cylfifir y sgôr pwyntiau cyfarbolog eang wedi'i gapio gan ddefnyddio'r 8 canrlyniad gorau.

(4) Cymrwysler Lefel Mynedac.

(5) Defnyddir ar yfar holl ddsblau meionodi prydau am ddim. Dangosir y dangosydd yma dim ond am ysgolion uwchradd orff hnd.

(6) Nodwch mai einwedd y dangosydd yma yw'r disgyblion 15 oed a geisiodd arhollad Cymraeg Iarh Cymraeg.

yn hyllech na chyfeirir yr holl ddisgyblion 15 oed.

.. Data ddim ar gael

**Pupils aged 15**

Number of pupils aged 15 who were on roll in January 2014 : 160

Percentage of pupils aged 15 who:

	achieved an A*-C Grade in :					Average Points per pupil in :		
	English / Welsh	English	Welsh (0)	Maths	Science	English / Welsh	Maths	Science
School 2013/14	74	70	60	63	51	42	38	41
LA Area 2013/14	59	55	72	60	68	38	38	45
Wales 2013/14	57	56	74	62	62	39	36	47
School 12/13/14	70	67	62	69	76	41	40	41
School 11/12/13	58	64	61	71	71	40	40	45

Number of boys aged 15 who were on roll in January 2014 : 71

Percentage of boys aged 15 who:

	achieved an A*-C Grade in :					Average Points per pupil in :		
	English / Welsh	English	Welsh (0)	Maths	Science	English / Welsh	Maths	Science
School 2013/14	55	53	49	55	79	39	36	41
LA Area 2013/14	51	56	64	61	65	37	36	42
Wales 2013/14	50	58	64	61	60	35	30	45
School 12/13/14	61	59	49	73	76	38	40	41
School 11/12/13	58	55	49	70	70	36	40	40

Number of girls aged 15 who were on roll in January 2014 : 89

Percentage of girls aged 15 who:

	achieved an A*-C Grade in :					Average Points per pupil in :		
	English / Welsh	English	Welsh (0)	Maths	Science	English / Welsh	Maths	Science
School 2013/14	61	60	58	61	63	43	36	41
LA Area 2013/14	77	73	78	67	61	42	36	47
Wales 2013/14	76	75	82	63	65	41	37	49
School 12/13/14	78	76	73	66	77	45	39	41
School 11/12/13	79	74	74	68	73	43	40	40

(1) For details on approved qualifications, point scores and contribution to thresholds, please visit (DAQW) at <http://www.daqw.org.uk/>

(2) For information about which syllabuses are included in each subject area see Notes for G.

(3) Average capped wider point scores are calculated using the best 8 results.

(4) Entry Level Qualification.

(5) Used for all Free School Meal benchmarking tables. This indicator is only shown for mainstream secondary schools.

(6) Note that the denominator for this indicator is the number of 15 year olds who entered Wales rather than the total number of 15 year olds.

-- Data not available.

**Disgyblion 15 oed**

	Canran y disgyblion 15 oed a:		Canran y bechgyn 15 oed a:		Canran y merched 15 oed a:	
	enillodd un CLM (4) neu ragor yn unig	heb ennill gymhwyster sydnabyddedig	enillodd un CLM (4) neu ragor yn unig	heb ennill gymhwyster sydnabyddedig	enillodd un CLM (4) neu ragor yn unig	heb ennill gymhwyster sydnabyddedig
Ysgol 2013/14	0	0.0	0	0.0	0	0.0
Amal ALI 2013/14	1	0.0	1	1.0	0	0.0
Cymru 2013/14	1	1.1	1	1.1	0	0.0
Ysgol 12/13/14	0	0.0	0	0.0	0	0.0
Ysgol 11/12/13	0	0.0	0	0.0	0	0.0

**Disgyblion 17 oed**

	Nifer y disgyblion 17 oed a oedd ar y gofrestr yn Ionawr 2014: 106		Nifer y bechgyn 17 oed a oedd ar y gofrestr yn Ionawr 2014: 46		Nifer y merched 17 oed a oedd ar y gofrestr yn Ionawr 2014: 60	
	Canran y disgyblion 17 oed a gofrestrodd am gyfaint o ddysgu yn gyfartal i 2 lefel A os yn ennill y trothwy Lefel 3	Sgôr bwyntiau gyfartalog ar ôl am bob effeithliedd 17 oed	Canran y disgyblion 17 oed a gofrestrodd am gyfaint o ddysgu yn gyfartal i 2 lefel A os yn ennill y trothwy Lefel 2	Sgôr hyspiau gyfartalog ar ôl am bob disgybl 17 oed	Canran y disgyblion 17 oed a gofrestrodd am gyfaint o ddysgu yn gyfartal i 2 lefel A os yn ennill y trothwy Lefel 3	Sgôr bwyntiau gyfartalog ar ôl am bob disgybl 17 oed
Ysgol 2013/14	100	921	100	897	100	899
Amal ALI 2013/14	98	878	98	824	98	816
Cymru 2013/14	97	894	96	759	98	844
Ysgol 12/13/14	100	957	100	951	100	977
Ysgol 11/12/13	100	986	98	917	100	1005

(1) I gael manylion ar gywirysrwyddau sydd wedi'u cymeriadau, sgôr hyspiau a chyfranod ar y trothwy, gweler y Gwybodaeth Ddeta Cywirysrwyddau Cymraeddy Cymru (DACWC) yn <http://www.dagw.org.uk/>

(2) Mae manylion ynglŷn â pha leysyrir i'w hyspiau yn rhob poru ar y trothwy, gweler y Gwybodaeth Ddeta Cywirysrwyddau Cymraeddy Cymru (DACWC) yn <http://www.dagw.org.uk/>

(3) Cyfrifir y sgôr gwyrir ar gyfartalog ar ôl am bob effeithliedd 17 oed.

(4) Cymhwyster Lefel 3 Myndod.

(5) Defnyddir ar gyfer holl ddsbau mewnolod) onyda, am ddim. Dangosir y dangosydd yma dim ond am ysgolion uwchradd prif ym.

(6) Nodwch mai enwedur y dangosydd yma yw'r disgyblion 15 oed a gofrestrodd ar ôl ym 2013/14 yn hyspiau na chyfanswm yn holl ddisgyblion 15 oed.

.. Dda'r ddim ar gael.

**Pupils aged 15**

	Percentage of pupils aged 15 who:		Percentage of boys aged 15 who:		Percentage of girls aged 15 who:	
	achieved one or more ELQ (4) only	achieved no recognised qualification	achieved one or more ELQ (4) only	achieved no recognised qualification	achieved one or more ELQ (4) only	achieved no recognised qualification
School 2013/14	0	0.0	0	0.0	0	0.0
LA Area 2013/14	1	0.6	1	1.0	0	0.0
Wales 2013/14	1	1.1	1	1.4	0	0.7
School 12/13/14	0	0.0	0	0.0	0	0.0
School 11/12/13	0	0.0	0	0.0	0	0.0

**Pupils aged 17**

	Number of pupils aged 17 who were on roll in January 2014: 106		Number of boys aged 17 who were on roll in January 2014: 46		Number of girls aged 17 who were on roll in January 2014: 60	
	Percentage of 17 year old pupils entering a volume equivalent to 2 A levels who achieved the Level 3 threshold	Average wider points score for pupils aged 17	Percentage of 17 year old pupils entering a volume equivalent to 2 A levels who achieved the Level 3 threshold	Average wider points score for pupils aged 17	Percentage of 17 year old pupils entering a volume equivalent to 2 A levels who achieved the Level 3 threshold	Average wider points score for pupils aged 17
School 2013/14	100	821	100	897	100	939
LA Area 2013/14	98	876	86	824	96	916
Wales 2013/14	97	804	86	708	98	844
School 12/13/14	100	867	100	854	100	977
School 11/12/13	100	860	89	867	100	1005

(1) For details on approved qualifications, point scores and contribution to thresholds, please see the Database for Approved Qualifications in Wales (DAQW) at: <http://www.dasw.org.uk/>

(2) For information about which syllabuses are included in each subject area see Notes for Guidance.

(3) Average capped wider point scores are calculated using the best 8 GCSE results or the vocational equivalent.

(4) Entry Level Qualification.

(5) Used for all Free School Model benchmarking tables. This indicator is only shown for mainstream secondary schools.

(6) Note that the denominator for this indicator is the number of 16 year olds who entered Welsh First Language, rather than the total number of 16 year olds.

... Data not available.

Ysgol David Hughes

Math o Ysgol: Comprehensive 11-18  
Iaith yr Ysgol: Bilingual

**SSSP 2014**

Rhif ALI/Ysgol 660 / 4028

Nifer o Unedau AAA/Dosbarthladau Arbennig 2014: 0

Nifer y disgyblion ar y gofrestr ym mlwyddyn 11 2014: 181

Canran y disgyblion o oedran ysgol gorfodol a hawl i gael prydau am ddim yn 12/13/14<sup>161</sup>: 11.1

Canran y disgyblion 15 oed ar y gofrestr AAA 2014: 26.5

Cynigir y Fagloriaeth Cymru: Yes

Lafel o Fagloriaeth Cymru a gynigir:

Lafel uwch ar gyfer disgyblion 6-16	Lafel canolradd ar gyfer disgyblion 6-16	Lafel gyfnewid ar gyfer disgyblion 6-16	Lafel canolradd ar gyfer disgyblion 16-18 oed	Lafel gyfnewid ar gyfer disgyblion 16-18 oed
Yes	No	No	Yes	Yes

(1) I gael manylion ar gynhyrwydau sydd wedi'u cynhyrwyd, sgôr pwyllau a chyfranod sŵ y throthwy, gweler y Cronfa Ddali Cymwysterau Cymraeg Cymru (DADWC) yn <http://www.daqw.org.uk/>

(2) Mae manylion ynglyn â phroffesiynol sydd ym mhob pwrdd ar gael yn y nodiadau cyfarwyddyd.

(3) Cylifir y sgôr pwyllau cyfartalog eang wedi'g papio pan ddeir yd o'r 9 califeryd gorau.

(4) Cynhyrwyd Lafel Mynediad.

(5) Dderbyddir ar gyfer holl nodau mewnoll prydau am ddim. Dangosir y canlyniad yma ddim ond am ysgolion uwchradd prifffordd.

(6) Nodwch mai enwadu y dangosydd yma yw'r disgyblion 15 oed a geiriodd arholiad Cymraeg Iaith Gyntaf, yn hytrach na chyfanswm yr holl disgyblion 15 oed.

.. Data ddim ar gael.

Ysgol David Hughes

School Type: Comprehensive 11-18

Linguistic Delivery: Bilingual

**SSSP 2014**

LA/School No. 660 / 4028

Number of SEN Unit/Special Classes 2014: 0

Number of Pupils on Roll in NCY 11 2014: 161

Percentage of compulsory school age pupils eligible for FSM 12/13/14<sup>(1)</sup>: 11.1

Percentage of 15 year old pupils on SEN register 2014 : 26.5

Welsh Baccalaureate Offered: Yes

Level of Welsh Baccalaureate Offered:

Advanced for post-16 pupils	Intermediate for post-16 pupils	Foundation for post-16 pupils	Intermediate for pre-16 pupils	Foundation for pre-16 pupils
Yes	No	No	Yes	Yes

(1) For details on approved qualifications, point scores and contribution to thresholds, please see the Database for Approved Qualifications in Wales (DAQW) at <http://www.daqw.org.uk/>

(2) For information about which syllabuses are included in each subject area see Notes for Guidance.

(3) Average mapped wider point scores are calculated using the best 5 GCSE results or the vocational equivalent.

(4) Entry Level Qualification.

(5) Used for all Free School Meal benchmarking tables. This indicator is only shown for mainstream secondary schools.

(6) Note that the denominator for this indicator is the number of 15 year olds who entered Welsh First Language, rather than the total number of 15 year olds.

.. Data not available.



**YSGOL DAVID HUGHES**

**Crynodeb o ganlyniadau Aseidiadau Cwricwlym Cenedlaethol disgyblion yn yr ysgol (2014) ac yn genedlaethol (2013) ar ddiwedd Cyfnod Allweddol 3 fel canran o'r rhai oedd yn gymwys i'w hanesu**

		N	D	NC01	NC02	NC03	1	2	3	4	5	6	7	8	EP	51	61	71
Santur	Ysgol 2014	0	0	0	0	0	0	0	0	0	0	0	0	0	0	89	90	16
	Cenedlaethol 2013	0	0	0	0	0	0	1	5	12	43	19	11	1	0	62	42	12
Cymraeg	Ysgol 2014	0	0	0	0	0	0	1	2	9	25	47	16	1	0	80	64	17
	Cenedlaethol 2013	0	0	0	0	*	*	0	0	10	42	43	12	1	*	88	46	12
Mathemeg	Ysgol 2014	0	0	0	0	0	0	0	3	8	17	17	37	4	0	90	74	36
	Cenedlaethol 2013	0	0	0	0	0	0	1	3	11	51	32	18	2	-	86	53	21
Gwyddoniaeth	Ysgol 2014	0	0	0	0	0	0	0	1	7	34	44	27	1	0	95	59	25
	Cenedlaethol 2013	0	0	0	0	0	0	0	2	10	38	24	14	1	-	87	49	15
Cymraeg Allweddol	Ysgol 2014	0	0	0	0	0	0	2	6	4	17	37	15	0	0	89	52	13
	Cenedlaethol 2013	1	1	0	0	0	1	1	6	17	41	25	7	1	0	74	34	4
Iaith Ddeur Ffurf	Ysgol 2014	0	2	0	0	0	0	0	0	2	35	40	17	4	0	96	61	21
	Cenedlaethol 2013	1	2	0	0	0	1	1	4	14	38	30	10	1	-	79	41	11
Bwlcher Theololeg	Ysgol 2014	0	0	0	0	0	0	0	1	5	35	39	20	1	0	95	60	21
	Cenedlaethol 2013	0	0	0	0	0	0	1	1	9	45	14	9	0	-	88	43	5
Technoleg Gwybodaeth	Ysgol 2014	0	0	0	0	0	0	0	0	5	25	48	27	0	0	95	70	22
	Cenedlaethol 2013	0	0	0	0	0	0	0	1	8	32	17	11	0	0	90	48	11
Hanes	Ysgol 2014	0	1	0	0	0	0	0	0	7	32	42	13	6	0	95	61	19
	Cenedlaethol 2013	0	0	0	0	0	0	1	2	11	39	33	12	1	-	85	46	13
Dewysyddiaeth	Ysgol 2014	0	0	0	0	0	0	0	0	3	41	15	18	4	0	98	57	22
	Cenedlaethol 2013	0	0	0	0	0	0	1	2	13	40	11	17	1	0	84	44	13
Celf	Ysgol 2014	0	0	0	0	0	0	0	0	7	43	27	21	1	0	95	57	25
	Cenedlaethol 2013	0	0	0	0	0	0	0	1	9	44	33	11	1	-	89	45	12
Cerdiaeth	Ysgol 2014	0	0	0	0	0	0	0	2	4	41	14	16	2	0	95	52	18
	Cenedlaethol 2013	-	0	0	0	0	0	0	1	10	32	37	7	1	0	87	35	4
Addysg Gelffart	Ysgol 2014	0	0	0	0	0	0	0	0	7	36	12	21	1	0	95	57	25
	Cenedlaethol 2013	1	0	0	0	0	0	0	1	11	30	38	8	1	-	87	37	5
Addysg Gen-yddol	Ysgol 2014	0	0	0	0	0	0	0	1	11	35	32	18	2	0	87	52	20
	Cenedlaethol 2013																	

Dauogysydd Penc Craidd **	Nifer Dechreu	Nifer Bachys 4 DPC	% Bachys 4 DPC	Nifer Merched	Nifer Merched DPC	% Merched DPC	Canran Bachys a Merched
Ysgol 2014	88	32	32	42	25	61	57
Cenedlaethol 2013			72			82	77

- N** Ni ddilyniwyd lefelau segiadau Eiddau datgynhygu
  - D** Diwybwr wrth hysbysu neu datgynhygu o can Adun 1131, 16 o Ddeddf Addysg 2002
  - NC01** Deiliant 1 Cwricwlwm Cenedlaethol
  - NC02** Deiliant 2 Cwricwlwm Cenedlaethol
  - NC03** Deiliant 3 Cwricwlwm Cenedlaethol
  - EP** Diwybwr yn dangos perfformiad uchelraddus
  - Dim yn erioed yn ddies
  - \*** Mae'r ffigur yn llai na phlws neu ni ddigwydd dim yn yllwngol
- Dauogysydd Penc Craidd\*\*** Y canran o ddiwybwrion yn cynyddu lefel o lefel 4 neu uwch naill ai Gymraeg (iaith gyntaf) neu Serneg, Mathemeg a Gwyddoniaeth neu cyfuniad.
- Sylwch: mae'r hysbysu y rhifau seidiol yd yn 100% o achos mudiol

**YSGOL DAVID HUGHES**  
**Summary of National Curriculum Assessment results of pupils in the school**  
**(2014) and nationally (2013) at the end of Key Stage 3**  
**as a percentage of those eligible for assessment.**

		N	T	NC01	NC02	NC03	1	2	3	4	5	6	7	8	EP	5+	6+	7+
English	School 2014	0	0	0	0	0	0	0	2	9	30	32	18	0	0	80	30	15
	National 2013	0	0	0	0	0	0	1	3	15	40	30	11	1	0	82	42	13
Welsh	School 2014	0	0	0	0	0	0	1	2	9	25	47	16	1	0	80	64	17
	National 2013	0	0	0	0	*	*	0	2	10	42	33	13	1	*	88	46	13
Mathematics	School 2014	0	0	0	0	0	0	0	3	8	17	37	32	4	0	60	33	36
	National 2013	0	0	0	0	0	0	1	3	11	31	33	19	2	-	84	33	21
Science	School 2014	0	0	0	0	0	0	0	1	7	34	34	22	0	0	92	39	25
	National 2013	0	0	0	0	0	0	0	2	10	38	34	14	1	-	87	49	15
Welsh Second Language	School 2014	0	0	0	0	0	0	2	6	4	37	27	15	0	0	80	33	15
	National 2013	1	1	0	0	0	1	1	6	12	41	25	9	1	0	74	33	8
Modern Foreign Language	School 2014	0	2	0	0	0	0	0	0	2	35	40	17	4	0	56	61	21
	National 2013	1	2	0	0	0	1	1	4	14	38	30	10	1	-	79	41	11
Design and Technology	School 2014	0	0	0	0	0	0	0	1	5	35	29	20	1	0	92	60	21
	National 2013	0	0	0	0	0	0	1	1	9	45	34	9	0	-	88	43	9
Information Technology	School 2014	0	0	0	0	0	0	0	0	3	25	45	22	0	0	92	70	23
	National 2013	0	0	0	0	0	0	0	1	8	42	27	11	0	0	90	48	11
History	School 2014	0	1	0	0	0	0	0	0	5	32	42	15	8	0	52	61	10
	National 2013	0	0	0	0	0	0	1	2	11	38	33	12	1	-	85	46	13
Geography	School 2014	0	0	0	0	0	0	0	0	3	41	35	18	4	0	68	37	22
	National 2013	0	0	0	0	0	0	1	2	13	40	31	12	1	0	84	44	13
Art	School 2014	0	0	0	0	0	0	0	0	7	41	37	21	0	0	92	32	23
	National 2013	0	0	0	0	0	0	0	1	9	44	33	11	1	-	89	47	12
Music	School 2014	0	0	0	0	0	0	0	2	4	43	34	16	2	0	92	33	18
	National 2013	1	0	0	0	0	0	0	1	10	52	27	9	1	0	87	35	8
Physical Education	School 2014	0	0	0	0	0	0	0	0	2	36	32	21	4	0	53	37	25
	National 2013	1	0	0	0	0	0	0	1	11	50	28	8	1	-	87	37	9
Religious Education	School 2014	0	0	0	0	0	0	0	1	13	35	32	18	2	0	87	32	20
	National 2013																	

Core Subject Indicator **	Number of Boys	Number Boys CSI	% Boys CSI	Number of Girls	Number Girls CSI	% Girls CSI	Percentage Boys and Girls
School 2014	88	72	82	82	75	91	87
National 2013			72			62	77

- N Pupil not awarded a level for reasons other than disapplication
  - T Pupil disappplied under Section 113 to 116 of the Education Act 2002
  - NC01 National Curriculum Outcome 1
  - NC02 National Curriculum Outcome 2
  - NC03 National Curriculum Outcome 3
  - EP Pupil showing Exceptional Performance
  - Not quite zero
  - \* Figure is less than five or cannot be given for reasons of confidentiality
- Core Subject Indicator \*\* Percentage of pupils achieving Level 5 or above in English or Welsh (First Language), Mathematics and Science in combination
- Please note that because of rounding, figures may not always add up to 100%

Mae'r adroddiad hwn yn defnyddio data 2014 ar gyfer gwybodaeth gymharol yr ALI a Chymru

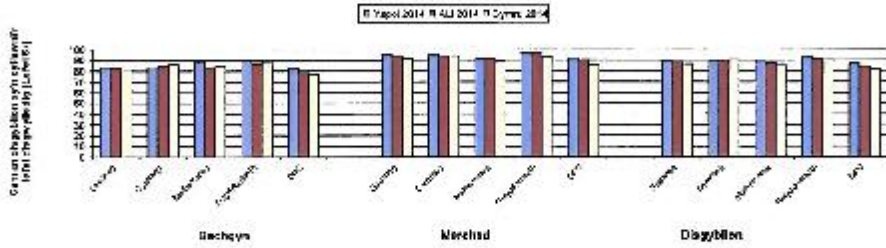
Ysgol David Hughes  
Ynys Môn

Rhif yr ALI/Ysgol:660/4028

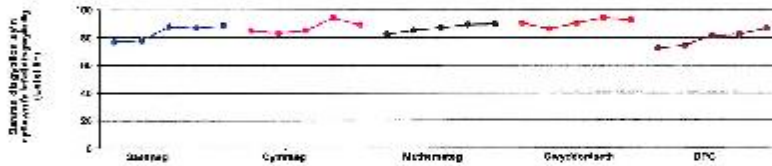
**Gwybodaeth gymharol yr ysgol: Aseidiadau'r Cwricwlwm Cenedlaethol 2014 gyda meincnodi  
Cyfnod Allwaddol 3**

Canran y bechgyn, merched a disgyblion sy'n cyflawni'r lefel disgwyliedig o leiaf (Lefel 5+):

	Bechgyn			Merched			Disgyblion		
	Ysgol 2014	ALI 2014	Cymru 2014	Ysgol 2014	ALI 2014	Cymru 2014	Ysgol 2014	ALI 2014	Cymru 2014
Basneteg	88	82	31	95	54	81	88	55	36
Cymraeg	89	94	16	95	54	94	89	59	90
Mathemateg	88	53	24	91	31	88	89	57	36
Gwyddorfaeth	89	97	33	85	26	83	82	51	90
DPC	82	78	77	91	30	85	88	34	81



**Perfformiad yr ysgol dros amser (2010 - 2014)**



**Gwybodaeth gyd-destunol**

Wedi'i methreoli yn eidd yr ysgol, diogelwch dibog o ddysgyblion o'n gymwys i gael Prydau Ysgol am Ddim.

Nodynwl canfyddiadau'r ysgol yn eidd yr ysgol. Mae perfformiad colofon yn eidd yr ysgol.

- Chwarter 1: Mae'r ysgol yn hŷthi y 25% uchaf
- Chwarter 2: Mae'r ysgol yn hŷthi y 65% uchaf ond nid y 33% uchaf
- Chwarter 3: Mae'r ysgol yn hŷthi y 65% uchaf ond nid y 20% isaf
- Chwarter 4: Mae'r ysgol yn hŷthi y 25% isaf

Grŵp Prydau Ysgol am Ddim  
10% neu fwy a hyd at 16% yn  
gymwys i gael Prydau Ysgol am  
Ddim

	Chwarter 1	Chwarter 2	Chwarter 3	Canolf	Chwarter 4	Chwarter 1
Basneteg	88	88	80		82	
Cymraeg	89	89	81		89	
Mathemateg	88	89	81		82	
Gwyddorfaeth	92	92	94		89	
DPC	86	88	87		88	

Mae'r mathemategu wedi cael eu symilo gan ddefnyddio cyfarfoddi targedol i ddiwyddo data Prydau Ysgol am Ddim.

**Nodiadau:**

- 1. Mae'r ffigurau ar gyfer Cymru yn eidd yr ysgol yn eidd yr ysgol.
- 2. DPC = Cergysydd Ffynfau Ddraig. I ddiwyddo DPC, mae'r modd i ddiwyddo gelfi o leiaf lefel 6 disgwyliedig mewn Mathemateg a Gwyddorfaeth a hŷthi at Cymraeg neu Basneteg i hŷthi gelfi.
- 3. Os ydych chi'n sefyll yn ddiwyddo gelfi yn eidd yr ysgol, mae'r ysgol yn eidd yr ysgol i hŷthi gelfi yn eidd yr ysgol i hŷthi gelfi.

This report uses data for 2014 for LA and Wales comparative information

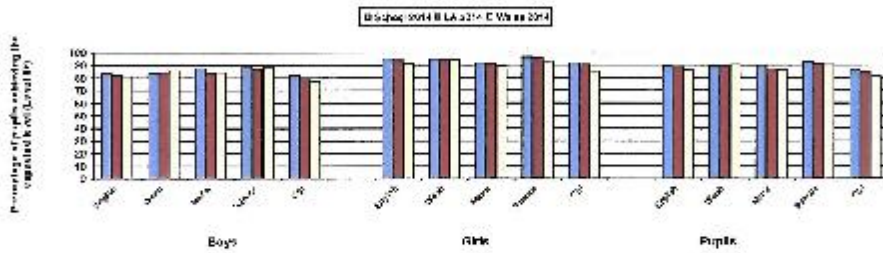
Ysgol David Hughes  
Isle of Anglesey

LA/School no: 880/4028

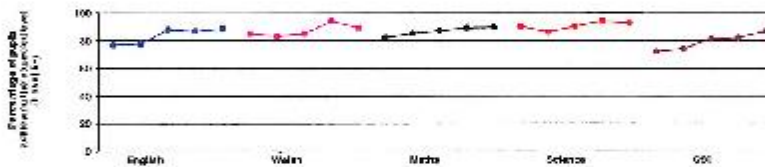
**School comparative information: National Curriculum Assessments 2014 with benchmarking**  
**Key Stage 3**

Percentage of boys, girls, and pupils achieving at least the expected level (Level 5+):

	Boys			Girls			Pupils		
	School 2014	LA 2014	Wales 2014	School 2014	LA 2014	Wales 2014	School 2014	LA 2014	Wales 2014
English	83	87	81	85	84	81	89	88	86
Welsh	85	84	80	85	84	84	89	88	80
Maths	86	83	84	91	87	89	93	91	88
Science	89	87	88	86	86	89	92	91	80
CSI	82	78	77	91	88	85	95	94	81



**School Performance over time (2010 - 2014)**



**Contextual Information**

Benchmarked against schools with a similar percentage of pupils eligible for free school meals.

School's results shown in greyed boxes. Column headings refer to...

- Quarter 1: School is in the top 25 per cent.
- Quarter 2: School is in the top 50 per cent but not the top 25 per cent.
- Quarter 3: School is in the bottom 50 per cent but not the bottom 25 per cent.
- Quarter 4: School is in the bottom 25 per cent.

Free School Meal Group  
More than or equal to 10 per cent and up to 15 per cent eligible for FSM

	Quarter 4	Lower Quartile	Quarter 3	Median	Quarter 2	Upper Quartile	Quarter 1
English	83	89	89	80	82	82	86
Welsh	85	84	80	81	84	84	80
Maths	86	83	84	91	87	89	88
Science	89	87	88	86	86	89	80
CSI	82	78	77	91	88	85	81

The benchmarks have been calculated using a three-year average for Free School Meal data.

**Notes:**

1. Figures for Welsh refer to attainment in Welsh first language only.
2. CSI = Core Subject Indicator. To achieve the CSI a pupil must achieve at least the expected level 5 in both Mathematics and Science and either English or Welsh first language.
3. If there were no pupils eligible for assessment in a subject for a particular year the graph will show a dashed line and show a gap for that year.

**Mae'r adroddiad hwn yn defnyddio data 2014 ar gyfer gwybodaeth gymharol yr ALI a Chymru**

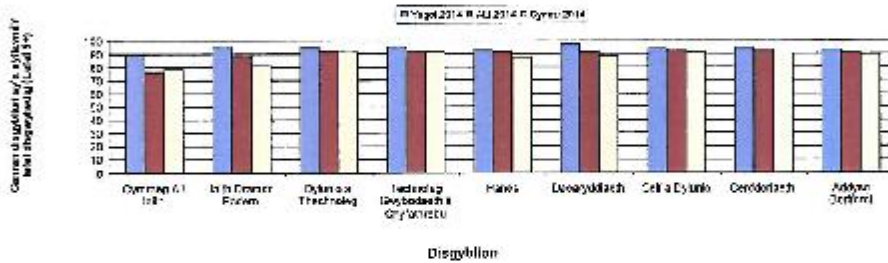
Ysgol David Hughes  
Ynys Môn

Rhif yr ALI/Ysgol: 860/4028

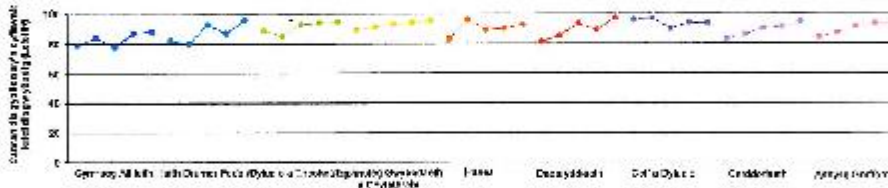
**Gwybodaeth gymharol yr ysgol: Asesiadau'r Cwricwlwm Cenedlaethol 2014 gyda meincodi  
Cyfnod Allweddol 3**

Canran disgyblion sy'n cyflawni'r lefel disgwyliedig (Lefel 5+)

	Bechgyn			Merched			Disgyblion		
	Ysgol 2014	ALI 2014	Cymru 2014	Ysgol 2014	ALI 2014	Cymru 2014	Ysgol 2014	ALI 2014	Cymru 2014
Cymraeg All-llith	62	65	71	95	87	85	77	76	78
Idith Cramer Fodern	92	82	78	100	84	88	75	88	82
Dylunio a Thechnoleg	91	87	87	99	87	86	81	92	81
Technoleg Gwybodaeth a Chyflwyno	81	87	88	100	98	94	85	82	81
Hanes	88	87	83	98	98	82	82	81	87
Deunyddiaeth	84	83	84	100	98	82	87	81	88
Celf a Dylunio	80	85	87	98	97	95	84	82	81
Cerddoriaeth	82	88	87	98	98	94	85	82	88
Addysg Gorfodol	87	88	89	80	94	80	83	81	88



**Perfformiad yr ysgol dros amser (2010 - 2014)**



**Gwybodaeth gyd-destunol**

Wedi'i meincodi yn erbyn ysgol a chanran oedog a disgyblion sy'n gymwys i gael Prydau Ysgol am Ddim.

Nodwch canlyniadau'r ysgol yn y blychau llwyd. Mae penwadau'r oedolion yn cyflwyno:

- Ddwarter 1: Mae'r ysgol ymhith y 26% uchaf
- Ddwarter 2: Mae'r ysgol ymhith y 60% uchaf ond nid y 25% uchaf
- Ddwarter 3: Mae'r ysgol ymhith y 50% isaf ond nid y 25% isaf
- Ddwarter 4: Mae'r ysgol ymhith y 26% isaf

Gŵp Prydau Ysgol am Ddim  
10% neu fwy a hyd at 15% yn gymwys i gael Prydau Ysgol am Ddim

	Ddwarter 4	Ddwarter 3	Ddwarter 2	Ddwarter 1
Cymraeg All-llith	73	84	88	88
Idith Cramer Fodern	85	92	95	96
Dylunio a Thechnoleg	81	88	95	97
Technoleg Gwybodaeth a Chyflwyno	87	95	95	97
Hanes	88	91	82	94
Deunyddiaeth	81	92	95	97
Celf a Dylunio	83	84	94	97
Cerddoriaeth	87	94	95	95
Addysg Gorfodol	81	88	93	95

Mae'r meincodiadau wedi cael eu cyflwyno gan ddefnyddio cyfarfelliadau targedol yn ddiwydiant Prydau Ysgol am Ddim.

Nodiadau:

1. Os nad oedd unrhyw ddisgyblion yn gymwys i wneud pwy ar gyfer blydyddyn benodol bydd y graff yn hyspysu'r blydyddyn hon yn ystod y blydyddyn honno.

This report uses data for 2014 for LA and Wales comparative information

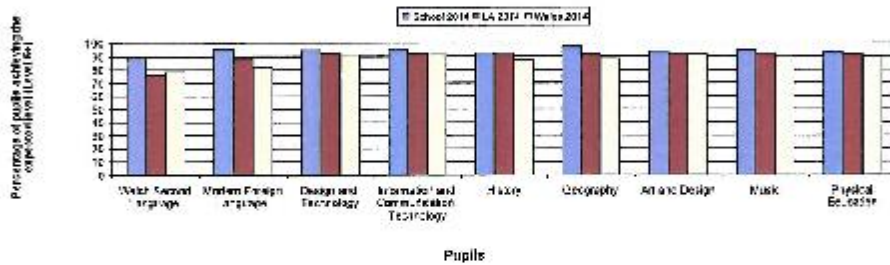
Ysgol David Hughes  
Isle of Anglesey

LA/School no: 580/4028

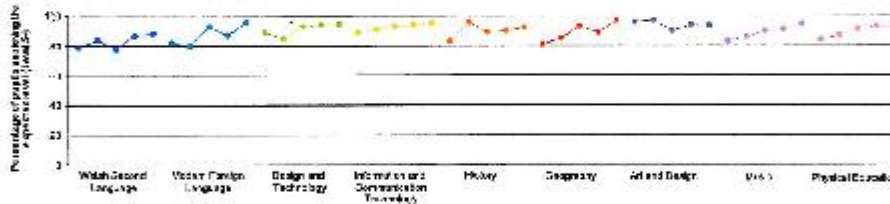
**School comparative information: National Curriculum Assessments 2014 with benchmarking  
Key Stage 3**

Percentage of pupils achieving the expected level (Level 5+)

	Boys			Girls			Pupils		
	School 2014	LA 2014	Wales 2014	School 2014	LA 2014	Wales 2014	School 2014	LA 2014	Wales 2014
Welsh Second Language	52	52	71	56	67	66	55	76	70
Modern Foreign Languages	32	52	76	100	64	88	66	31	88
Design and Technology	91	57	87	56	87	86	95	92	81
Information and Communication Technology	91	57	80	100	56	94	95	92	91
History	96	87	83	54	98	92	92	91	87
Geography	91	10	81	100	98	92	97	91	88
Art and Design	82	10	87	58	97	96	94	92	81
Music	82	19	87	54	98	94	95	92	80
Physical Education	87	19	88	88	94	90	93	91	88



**School Performance over time (2010 - 2014)**



**Contextual Information**

Benchmarked against schools with a similar percentage of pupils eligible for free school meals.

School's results shown in greyed boxes. Column headings refer to:

- Quarter 1 School is in the top 20 percent.
- Quarter 2 School is in the top 60 percent but not the top 25 percent.
- Quarter 3 School is in the bottom 10 percent but not the bottom 25 percent.
- Quarter 4 School is in the bottom 20 percent.

Free School Meal Group

More than or equal to 10 per cent and up to 15 per cent eligible for FSM

	Quarter 4	Lower Quartile	Quarter 3	Median	Quarter 2	Upper Quartile	Quarter 1
Welsh Second Language		71		84	88	90	
Modern Foreign Languages		32		50		93	98
Design and Technology		94	98	85		97	
Information and Communication Technology		91		85	95	97	
History		86		81	92	94	
Geography		81		89		95	97
Art and Design		82	88	84		97	
Music		82		84	95	96	
Physical Education		81	88	89		95	

The benchmarks have been calculated using a three-year average for Free School Meal data.

Notes:

- 1. If there were no pupils eligible for assessment in a subject for a particular year the dash will denote this and show a gap for that year.

TARGEDAU CYFLAWNIAD - MEDI 2014

\* Ar gyfer Cymraeg (CA3), nodwch y nifer sydd yn dilyn Cymraeg iaith gyntaf yn y colofn 'Nifer' ar gyfer y tair mlynedd.

	Targedau Blwyddyn 9-2013/2014			Targedau Blwyddyn 9-2014/2015			Targedau Blwyddyn 8-2014/2015			Targedau Blwyddyn 7-2014/2015			
	Nifer B3 2013/2014	% Targed lefel 5+ 2013/2014	Canlyniadau Ysgol 2013/2014	Targedau Siriol	Nifer B3 2014/2015	% Targed lefel 5+ 2014/2015	Targedau Siriol	Nifer B8 2014/2015	% Targed lefel 5+ 2014/2015	Targedau Siriol	Nifer B7 2014/2015	% Targed lefel 5+ 2014/2015	Targedau Siriol
<b>CA3</b>													
Cymraeg (iaith gyntaf) *	119	85%	89%		120	87%		130	88%		128	97%	
Saesneg	170	85%	89%		186	85%		188	88%		167	97%	
Mathemateg	170	92%	89%		186	92%		188	93%		167	95%	
Gwyddoniaeth	170	90%	92%		186	90%		188	93%		167	98%	
Dangosydd Pynciau Craidd (DPC)	170	83%	87%		186	83%		188	85%		167	93%	
DPC - Bechgyn	88	79%	82%		90	79%		101	83%		101	92%	
DPC - Merched	82	86%	91%		96	87%		87	87%		66	94%	
<b>CA4</b>													
Trothwy Lefel 2	160	94%	90%		177	91%		173	89%		186	89%	
Trothwy Lefel 1	160	98%	98%		177	99%		173	100%		186	99%	
Trothwy Lefel 2i	160	67%	60%		177	71%		173	79%		186	71%	
Dangosydd Pynciau Craidd (DPC)	160	65%	57%		177	71%		173	65%		186	65%	
DPC - Bechgyn	71	66%	56%		100	60%		87	60%		90	62%	
DPC - Merched	89	64%	57%		77	78%		86	71%		96	67%	
% yn gwrtael yn ddi-gymhwyster	160	0%	0.00%		177	0%		173	0%		186	0%	
% absenoldebau anawgurdoddecig	160	0%	0.10%		177	0%		173	0%		186	0%	

Anwyddwyd: *H. J. Williams* (Pennaeth)

Anwyddwyd: *S. J. Jones* (Cadeirydd y Llywodraethwyr)

**YSGOL DAVID HUGHES  
CYFRIFON TERFYNOI - 2013/2014**

**PAPUR / PAPER**

<b>GWARIANT/EXPENDITURE</b>	<b>Gwariant Cyfideb</b>	<b>C</b>
<b>Gweithwyr/Employees:</b>		
Athrawon/Teachers	£ 3,093,314.57	
Staff Cefnngol (Misc)/Support Staff (Monthly)	£ 268,619.24	
Cinio (Di-dde)	£ 14,170.73	
Costau Recriw/Recruiting Costs	£ 1,375.45	
Athrawon Llanw/Supply Teachers	£ 107,391.26	
Cyrsiau Cwrielwau Angol	£ 30,081.42	
ITMS/Inset	£ 28,810.11	
<b>Lwfins y Pen/Capitation Allowance</b>	£ 109,872.60	
<b>Adeiladau/Buildings:</b>		
Cynnal a Chodw/Repair and Maintenance	£ 18,083.74	
Bodrefn/Furniture	£ 6,833.61	
Trydan/Electricity	£ 34,623.39	
Dŵr/Water	£ 13,689.02	
Nwy/Gas	£ 22,856.75	
Trosbi/Rates	£ 101,250.00	
Iechyd a Diogelwch/Health & Safety	£ 2,378.54	
Larnw/Alarm	£ 1,505.38	
Offer Ymadd Tân/Fire Equipment	£ 600.00	
Defnyddiau Cynnalw/Careless Materials	£ 2,545.73	
<b>Gwasanaethau a Chyflenwadau/Supplies and Services:</b>		
Costau Arddiadau/Examination Costs	£ 120,095.23	
Gwasanaethau Adm. Administration	£ 8,800.50	
Ffôn/Telephone	£ 6,491.73	
Post/Postage	£ 4,169.07	
Cymorth Cyntaf/First Aid	£ 212.79	
Telchis/Travelling	£ 1,480.96	
<b>Gwasanaethau a Chyflenwadau-allanol</b>		
<b>Supplies and Services-External</b>		
Gwasanaethau Cerddebusic Service	£ 11,761.71	
Cofreogaeth Cynnal/Cynnal Support	£ 46,564.44	
Cyflwyno Cilanhu/Cleaning Contract	£ 88,385.28	
Cyfundeb Becten/Bins Contract	£ 5,744.04	
Cynnal Tiro/Ground Maintenance	£ 15,960.00	
Prydau Ysgol/School Meals	£ 42,793.00	
Cynnal a Chodw - Gwasinyddu / Repair + Maintenance (Admin)	£ 20,334.00	
Cynnal a Chodw (Arianau Teg) Maintenance (Fair Funding)	£ 27,517.11	
Personel a Chyflwyno/Personnel Salaries	£ 18,045.00	
Yngor Cyllid/Financial Advice	£ 5,885.00	
Taliadau-Incwm/Income Payments	£ 2,456.00	
Integrëddio	£ 262,222.59	
Arian Wrth Gelf/Reserves		
<b>CYFANSWM GWARIANT/TOTAL EXPENDITURE</b>	<b>£ 5,025,067.47</b>	
<b>Gwir Incwm/Actual Income:</b>		
Incwm Gwasanaethau/Other Income	-£ 4,410.90	
Incwm Araf/Other Income	-£ 71,515.71	
Graen GTCW	-£ 6,282.50	
Incwm GCY	-£ 88,511.00	
Incwm GAD	-£ 40,114.00	
Incwm Llanw Araf	-£ 1,903.00	
Incwm Cefnogi Cynhwysiad/GAD	-£ 13,800.00	
Incwm Cefnogi Rhwydweith 14-19	-£ 66,579.32	
Llog/Interest	-£ 5,507.68	
<b>CYFANSWM INCWM/TOTAL INCOME</b>	<b>-£ 301,624.11</b>	
<b>GWARIANT NET/NET EXPENDITURE</b>	<b>£ 4,723,443.36</b>	
<b>DYRANIAD/ALLOCATION 2013/2014</b>		£ 4,840,123.00
<b>GWARIANT NET/NET EXPENDITURE</b>		<b>£ 4,723,443.36</b>
<b>BALANS CYLLIDEB 2013/2014/BALANCE 2013/2014 BUDGET</b>		£ 116,679.64



YSGOL DAVID HUGHES - HYNŶ (DESTINATIONS) DISGYBLION BL 11, 12+13

PAPUR / PAPER  
D

MANYLION AM GYRCHAFARAU DISGYBLION DRDS 16 MLWYD DED/DETAILS OF DESTINATIONS OF PUPILS OVER 16 YEARS OF AGE

DISGYBLION BLWYDDYN 11/YEAR 11 PUPILS 2013/2014

BLŷE	NIFER DISGYBLION / NUMBER OF PUPILS		NIFER DISGYBLION HEB MYSGORATH A MARGRITH / NUMBER OF PUPILS WHOSE DESTINATION UNKNOWN	NIFER O DISGYBLION YN DYGHELDY FR YSGOL / NUMBER OF PUPILS RETURNED TO SCHOOL	NIFER O DISGYBLION YN PARHAU Mewn Ysgol Uwchradd / NUMBER OF PUPILS CONTINUING AT OTHER SECONDARY SCHOOL	NIFER O DISGYBLION YN PARHAU Mewn Adrosg Bellach / NUMBER OF PUPILS CONTINUING WITH FURTHER EDUCATION	NIFER O DISGYBLION YN YBYBODAETH YN ANAFODR / NUMBER OF PUPILS CONTINUING TO HIGHER EDUCATION	NIFER O DISGYBLION NEWIN CYFOGORTH / NUMBER OF PUPILS IN EMPLOYMENT
	MERCHEDI / GIRLS	BECHGYN / BOYS						
11	89	71		62		27		
				40		31		

DISGYBLION BLWYDDYN 12/ YEAR 12 PUPILS 2013/2014

BLŷE	NIFER DISGYBLION / NUMBER OF PUPILS		NIFER DISGYBLION HEB MYSGORATH A MARGRITH / NUMBER OF PUPILS WHOSE DESTINATION UNKNOWN	NIFER O DISGYBLION YN DYGHELDY FR YSGOL / NUMBER OF PUPILS RETURNED TO SCHOOL	NIFER O DISGYBLION YN PARHAU Mewn Ysgol Uwchradd / NUMBER OF PUPILS CONTINUING AT OTHER SECONDARY SCHOOL	NIFER O DISGYBLION YN PARHAU Mewn Adrosg Bellach / NUMBER OF PUPILS CONTINUING WITH FURTHER EDUCATION	NIFER O DISGYBLION YN YBYBODAETH YN ANAFODR / NUMBER OF PUPILS CONTINUING TO HIGHER EDUCATION	NIFER O DISGYBLION NEWIN CYFOGORTH / NUMBER OF PUPILS IN EMPLOYMENT
	MERCHEDI / GIRLS	BECHGYN / BOYS						
12	64	58		54	1	9		0
				49		9		0

DISGYBLION BLWYDDYN 13/ YEAR 13 PUPILS 2013/2014

BLŷE	NIFER DISGYBLION / NUMBER OF PUPILS		NIFER DISGYBLION HEB MYSGORATH A MARGRITH / NUMBER OF PUPILS WHOSE DESTINATION UNKNOWN	NIFER O DISGYBLION YN DYGHELDY FR YSGOL / NUMBER OF PUPILS RETURNED TO SCHOOL	NIFER O DISGYBLION YN PARHAU Mewn Ysgol Uwchradd / NUMBER OF PUPILS CONTINUING AT OTHER SECONDARY SCHOOL	NIFER O DISGYBLION YN PARHAU Mewn Adrosg Bellach / NUMBER OF PUPILS CONTINUING WITH FURTHER EDUCATION	NIFER O DISGYBLION YN YBYBODAETH YN ANAFODR / NUMBER OF PUPILS CONTINUING TO HIGHER EDUCATION	NIFER O DISGYBLION NEWIN CYFOGORTH / NUMBER OF PUPILS IN EMPLOYMENT
	MERCHEDI / GIRLS	BECHGYN / BOYS						
13	66	45						
						66		
						45		

## Adroddiad Cryno Presenoldeb



Ynys Môn  
Ysgol David Hughes

Canran presenoldeb disgyblion sydd ar y gofrestr a disgyblion sy'n gadael a oed ysgol orffodol yn unig ym mhob sesiwn bosibl

Oed	Dyddiad Geni	Yn bresennol (%)			Absenoldebau â chanlatâd (%)			Absenoldebau heb ganlatâd (%)			Heb fod eisiau Mynychu (%)		
		B	M	Cyfan swm	B	M	Cyfan swm	B	M	Cyfan swm	B	M	Cyfan swm
15	01/09/1997 - 31/08/1998	93.9	93.2	93.5	6.2	6.2	6.2	0.1	0.6	0.4	0.3	0.3	0.3
14	01/09/1998 - 31/08/1999	94.5	93.4	94.0	5.3	6.2	5.7	0.2	0.4	0.3	0.3	0.3	0.3
13	01/09/1999 - 31/08/2000	93.8	93.8	93.8	6.1	6.0	6.1	0.1	0.2	0.1	0.3	0.3	0.3
12	01/09/2000 - 31/08/2001	93.9	91.3	91.1	6.0	5.5	5.7	0.1	0.2	0.2	0.3	0.3	0.3
11	01/09/2001 - 31/08/2002	94.3	94.3	94.8	5.0	5.2	5.1	0.1	0.0	0.1	0.3	0.3	0.3
10	01/09/2002 - 31/08/2003	0.0	96.1	96.1	0.0	1.9	1.9	0.0	0.0	0.0	0.0	0.3	0.3
Libell 10	01/09/2003 - 31/08/2007	0.0	0.0	0.0	0.0	0.0	0.0	0.0	0.0	0.0	0.0	0.0	0.0
<b>Pob oedran</b>		<b>94.2</b>	<b>93.0</b>	<b>94.1</b>	<b>5.7</b>	<b>5.8</b>	<b>5.7</b>	<b>0.1</b>	<b>0.3</b>	<b>0.2</b>	<b>0.3</b>	<b>0.3</b>	<b>0.3</b>

PAPUR / PAPER  
E

Crëwyd yr adroddiad gan DEWI ar 08/10/2014

Tudalen 1 o 2

## Attendance Summary Report



Isle of Anglesey  
Ysgol Dewi Hughes

Attendance percentages of possible sessions for pupils on roll and leavers of compulsory school age only

Age	DOB	Attended (%)			Authorised absences (%)			Unauthorised absences (%)			Not required to attend (%)		
		B	G	Total	B	G	Total	B	G	Total	B	G	Total
15	01/08/1997 - 31/08/1998	93.8	93.2	93.5	6.2	6.2	6.2	0.1	0.8	0.4	0.3	0.3	0.3
14	01/09/1998 - 31/08/1999	94.6	93.4	94.0	5.3	6.2	5.7	0.2	0.4	0.3	0.3	0.3	0.3
13	01/09/1999 - 31/08/2000	93.8	93.8	93.8	6.1	6.0	6.1	0.1	0.2	0.1	0.3	0.3	0.3
12	01/09/2000 - 31/08/2001	93.8	94.3	94.1	6.0	5.5	5.7	0.1	0.2	0.2	0.3	0.3	0.3
11	01/09/2001 - 31/08/2002	94.3	94.8	94.9	5.0	5.2	5.1	0.1	0.0	0.1	0.3	0.3	0.3
10	01/09/2002 - 31/08/2003	0.0	98.1	98.1	0.0	1.9	1.9	0.0	0.0	0.0	0.0	0.3	0.3
Less than 10	01/09/2003 - 31/08/3001	0.0	0.0	0.0	0.0	0.0	0.0	0.0	0.0	0.0	0.0	0.0	0.0
<b>All ages</b>		<b>94.2</b>	<b>93.9</b>	<b>94.1</b>	<b>5.7</b>	<b>5.8</b>	<b>5.7</b>	<b>0.1</b>	<b>0.3</b>	<b>0.2</b>	<b>0.3</b>	<b>0.3</b>	<b>0.3</b>